

## Figures

---

The following pages show the figures referred to in the text.

Figure 1: Romanian present border

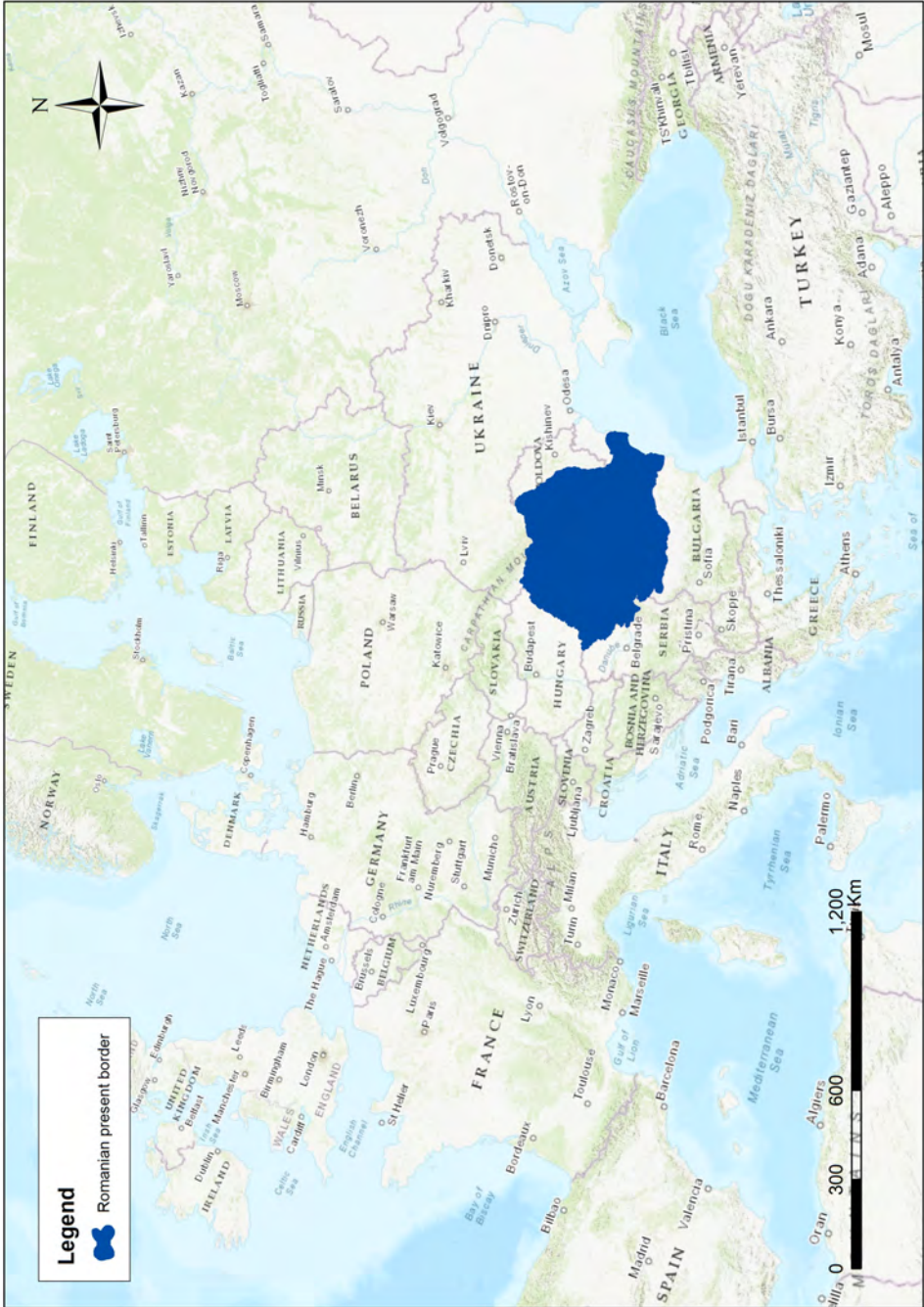


Figure 2: Historical borders of Romania

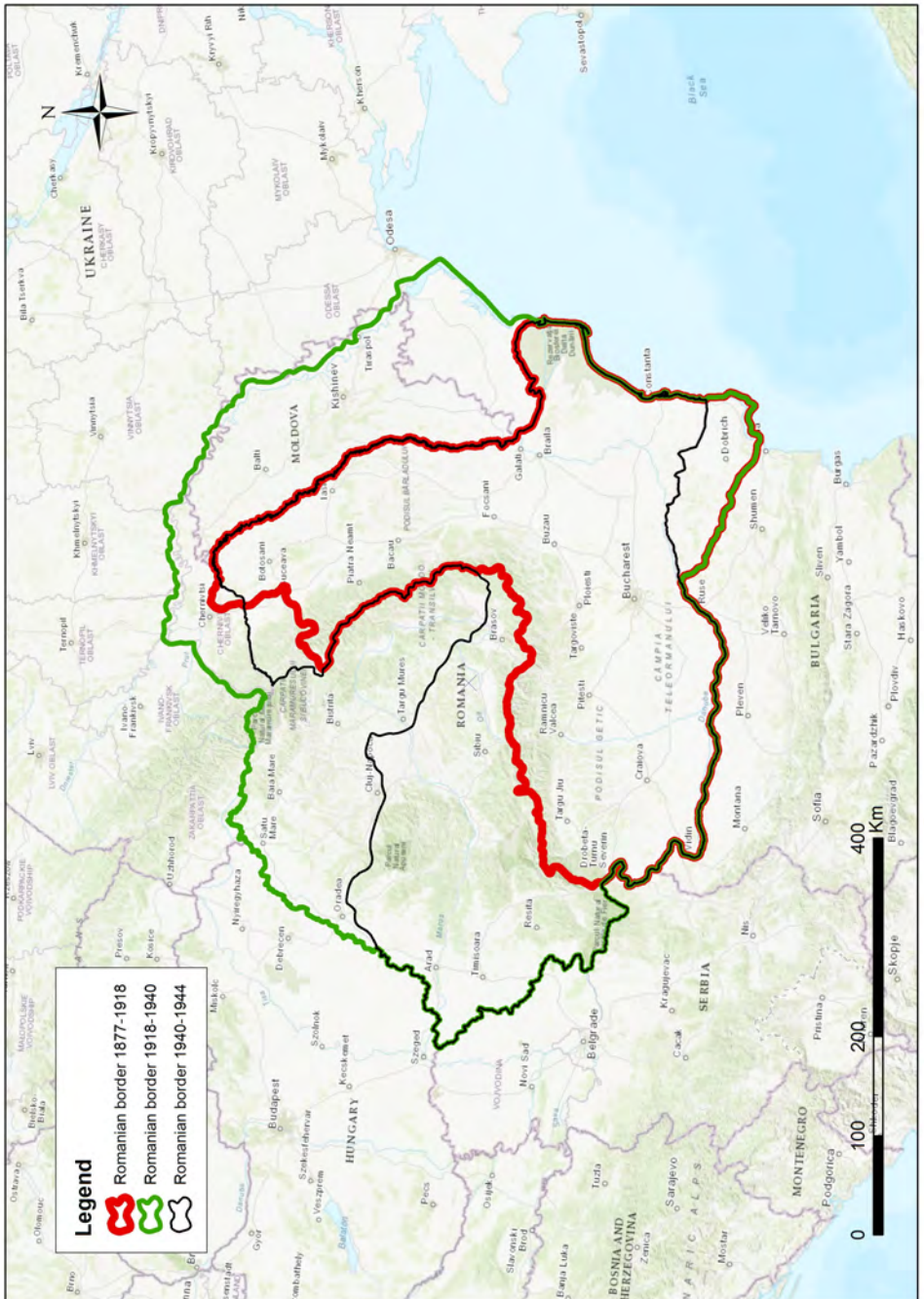


Figure 3: Limit of Transylvania



Figure 4: Events in Romanian per year 1894–1947

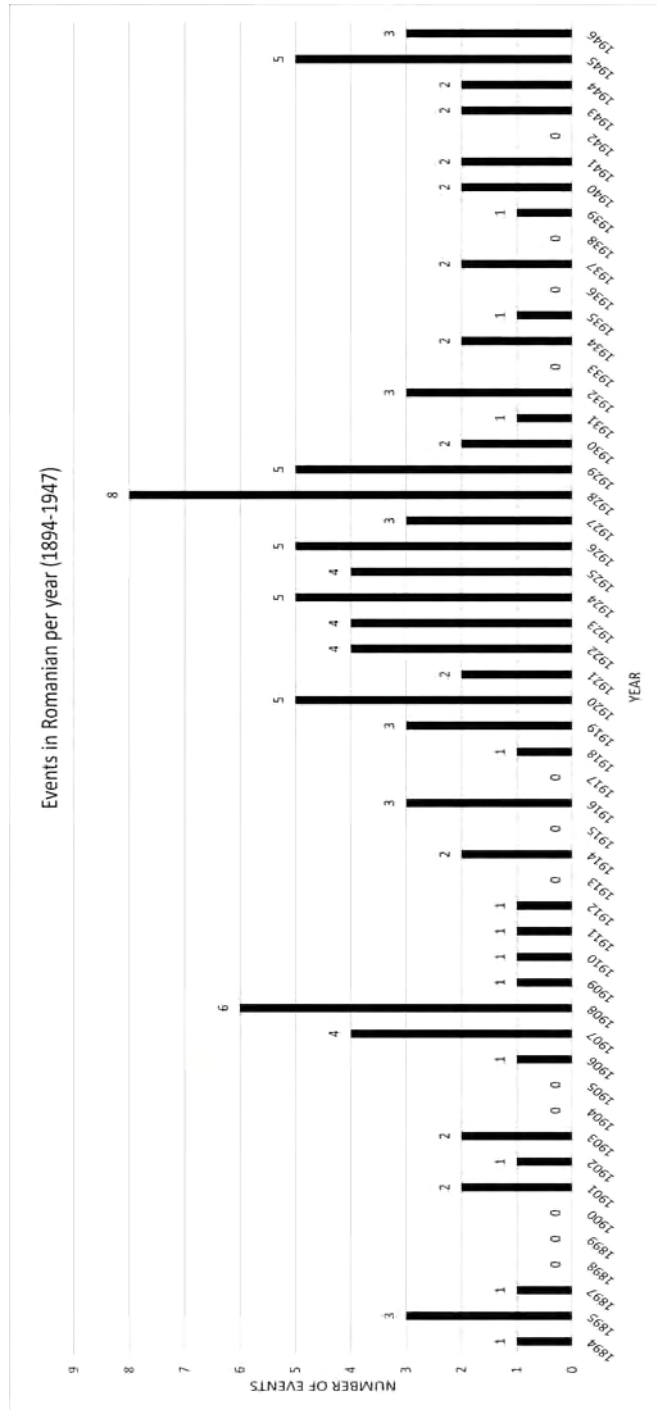


Figure 5: Events in Romania in all languages 1879–1947

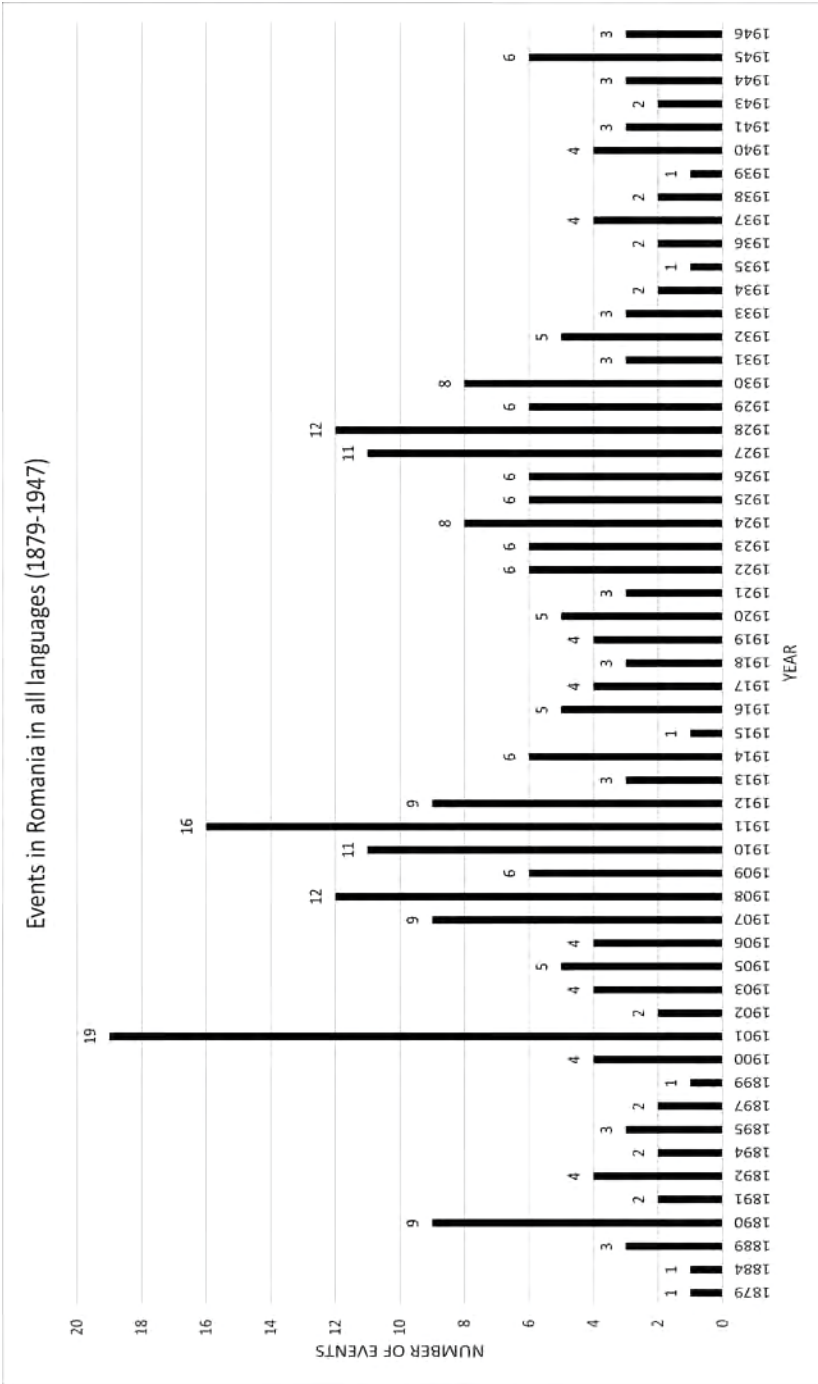


Figure 6: Events in French, Italian, German and Yiddish 1884–1940

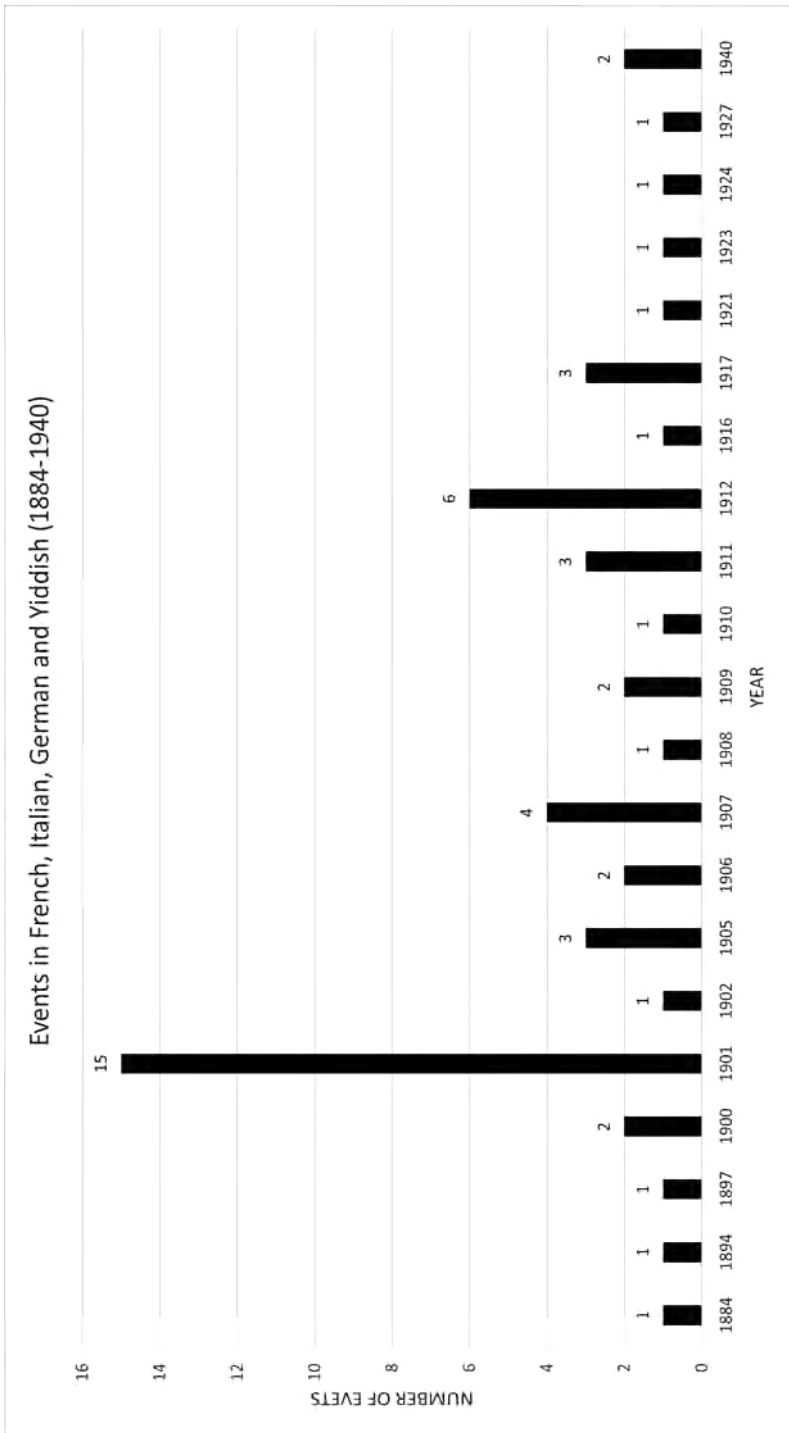


Figure 7: Events in Hungarian in Transylvania 1879–1945

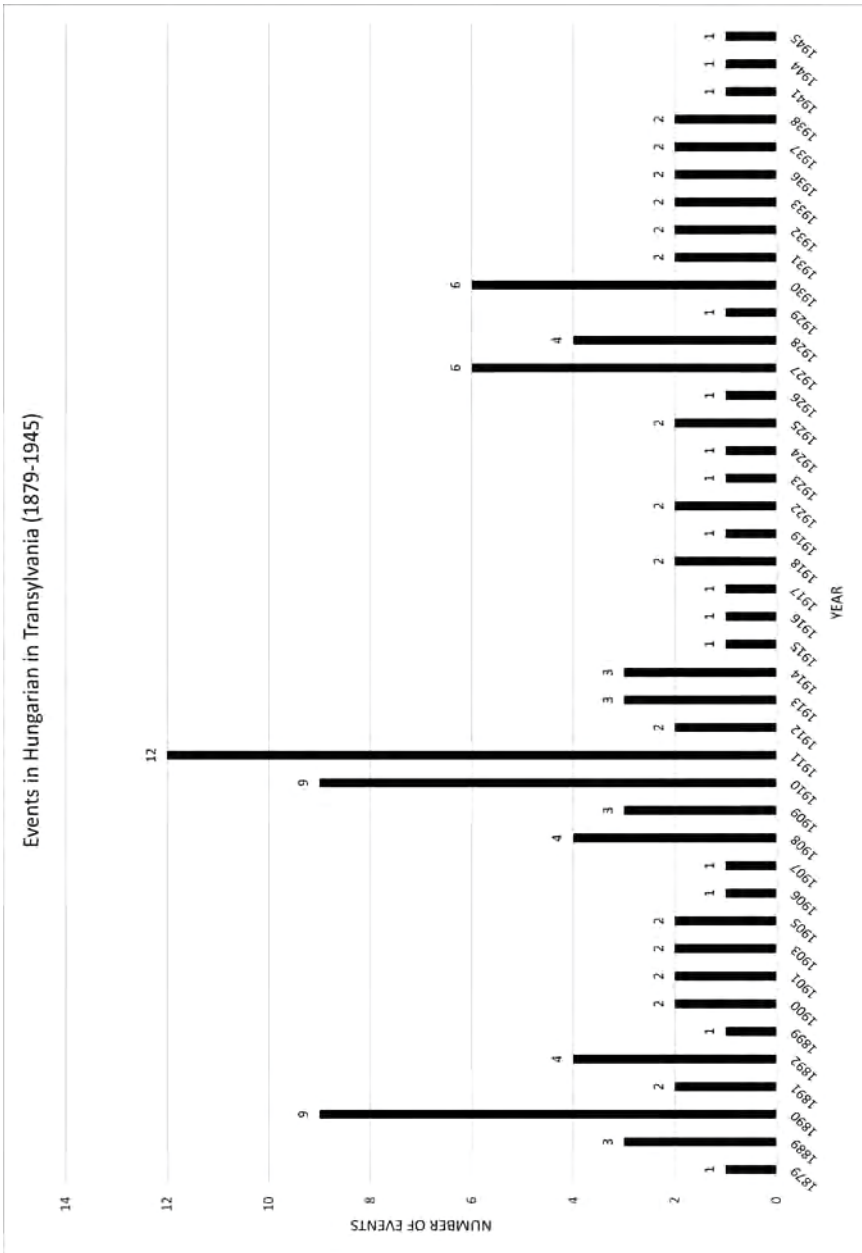


Figure 8: Foreign language tours 1879–1945

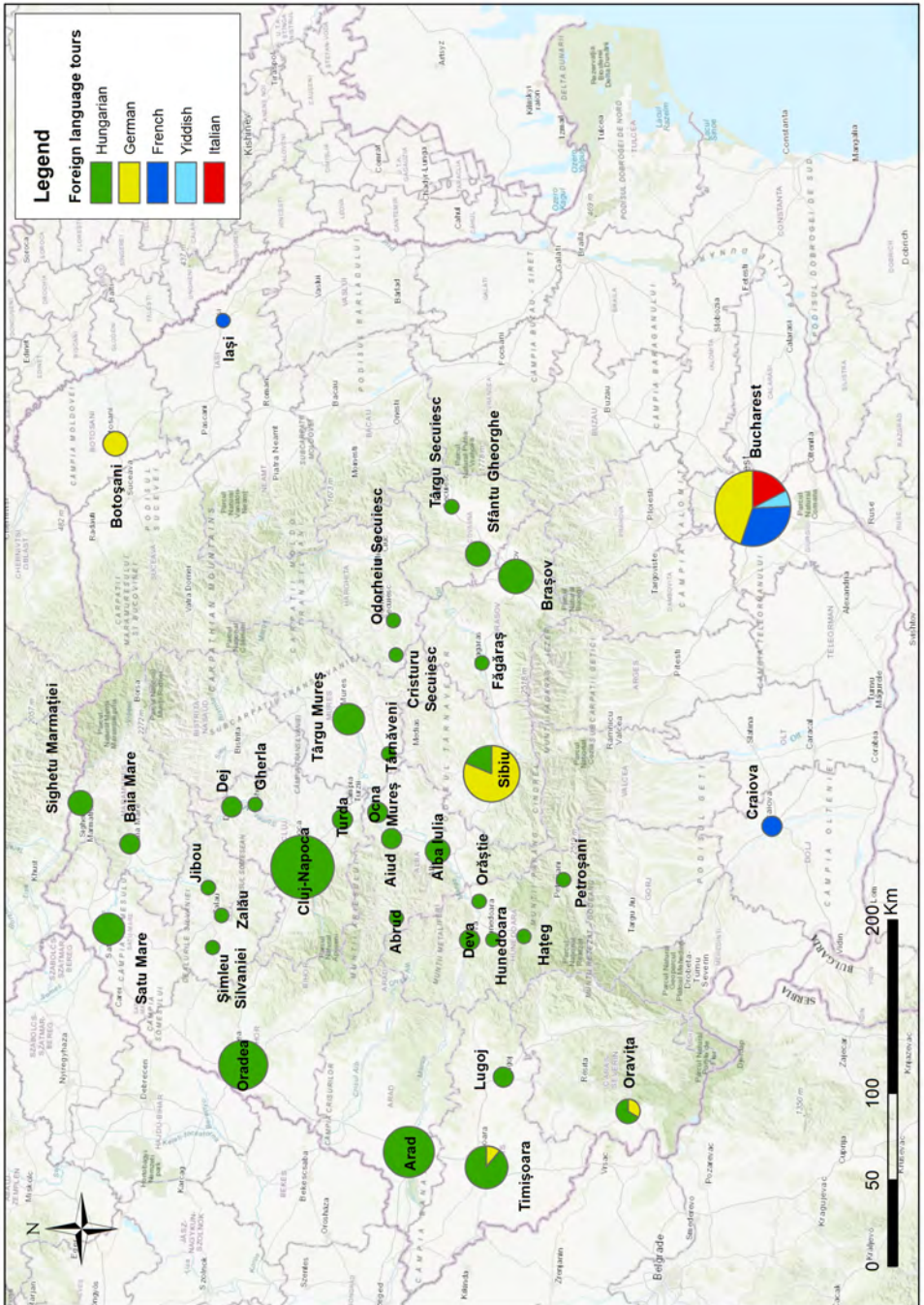


Figure 9: The French Ibsen tours visiting Romania

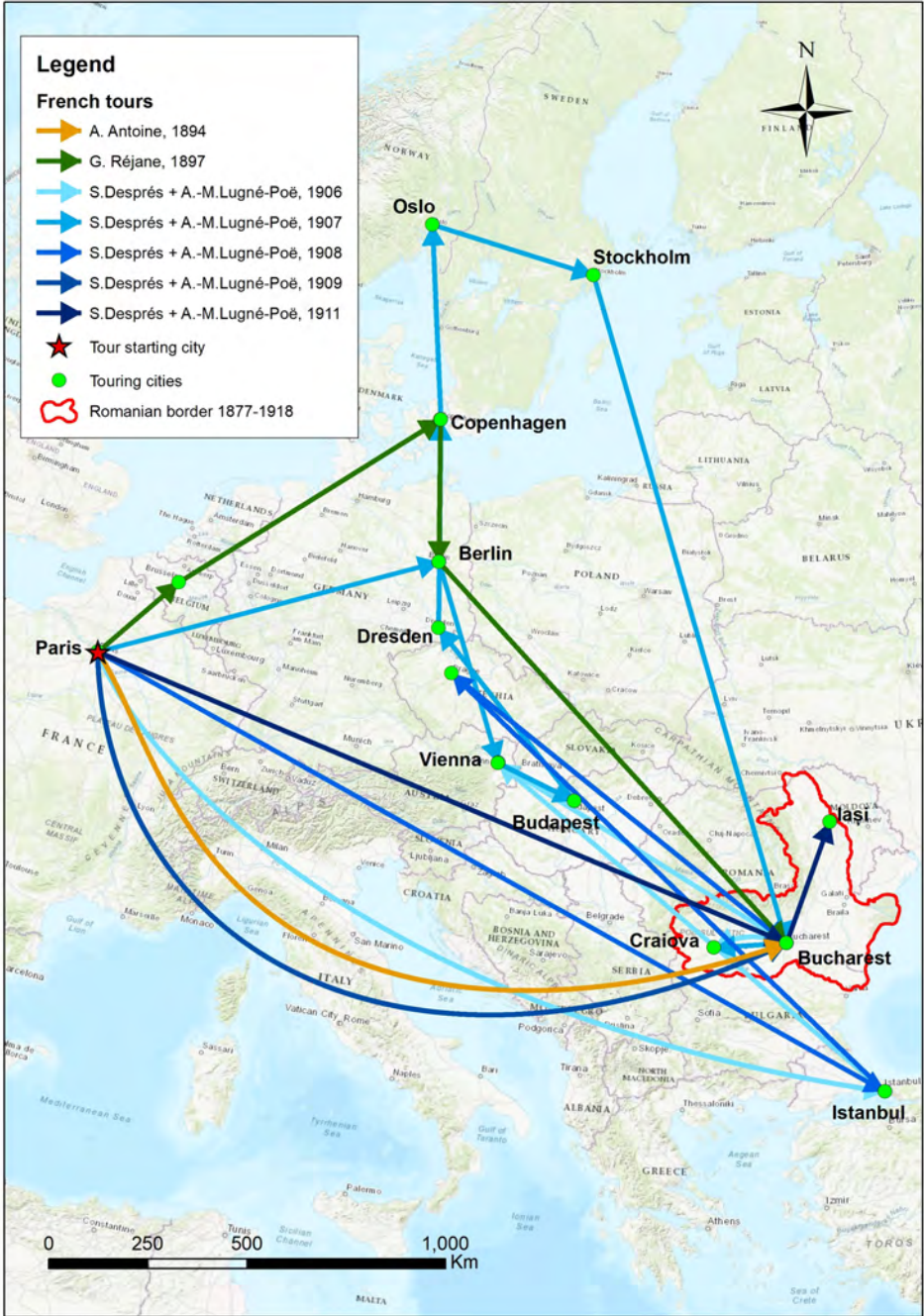


Figure 10: The Italian Ibsen tours visiting Romania

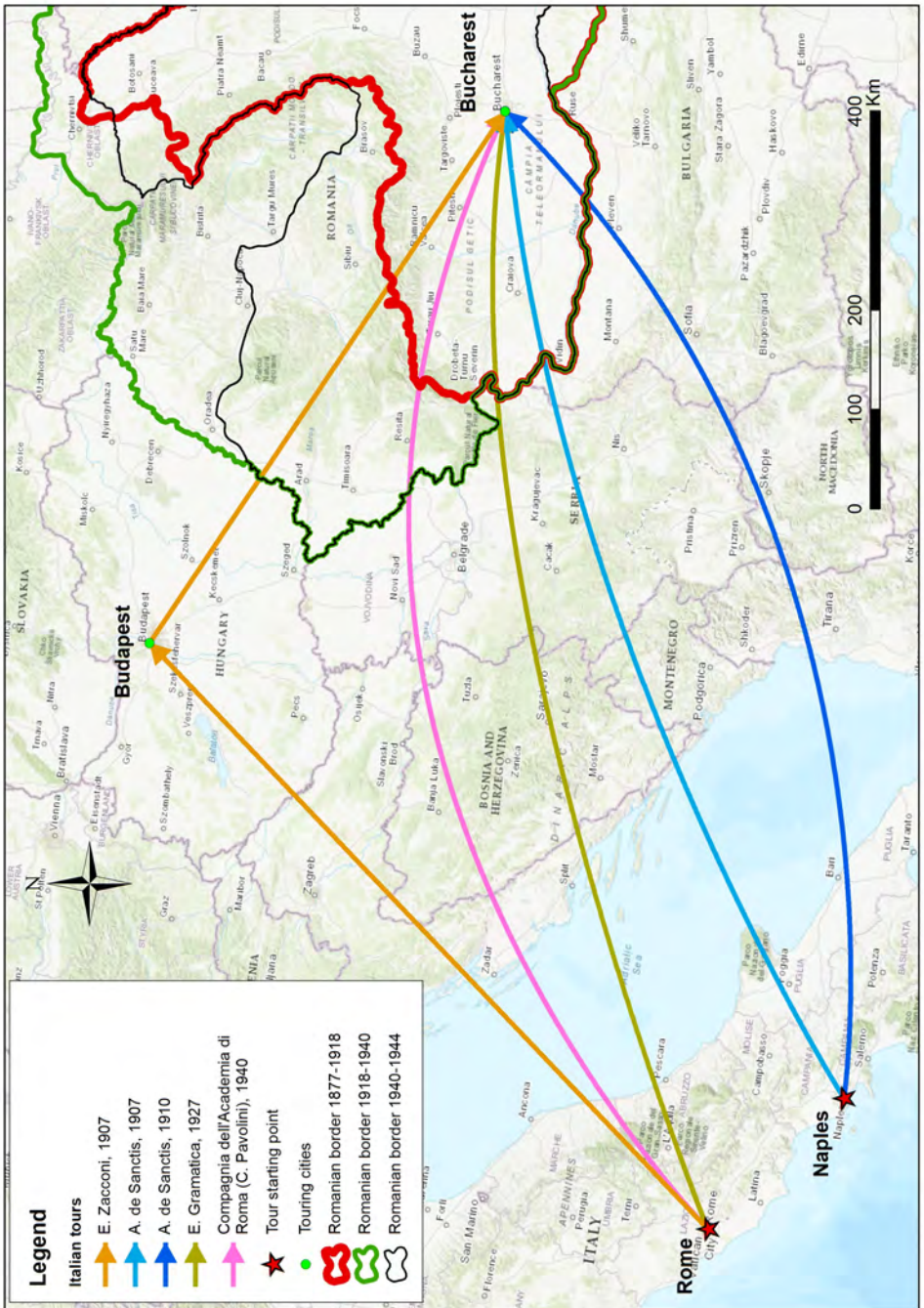


Figure 11: The German Ibsen tours visiting Romania

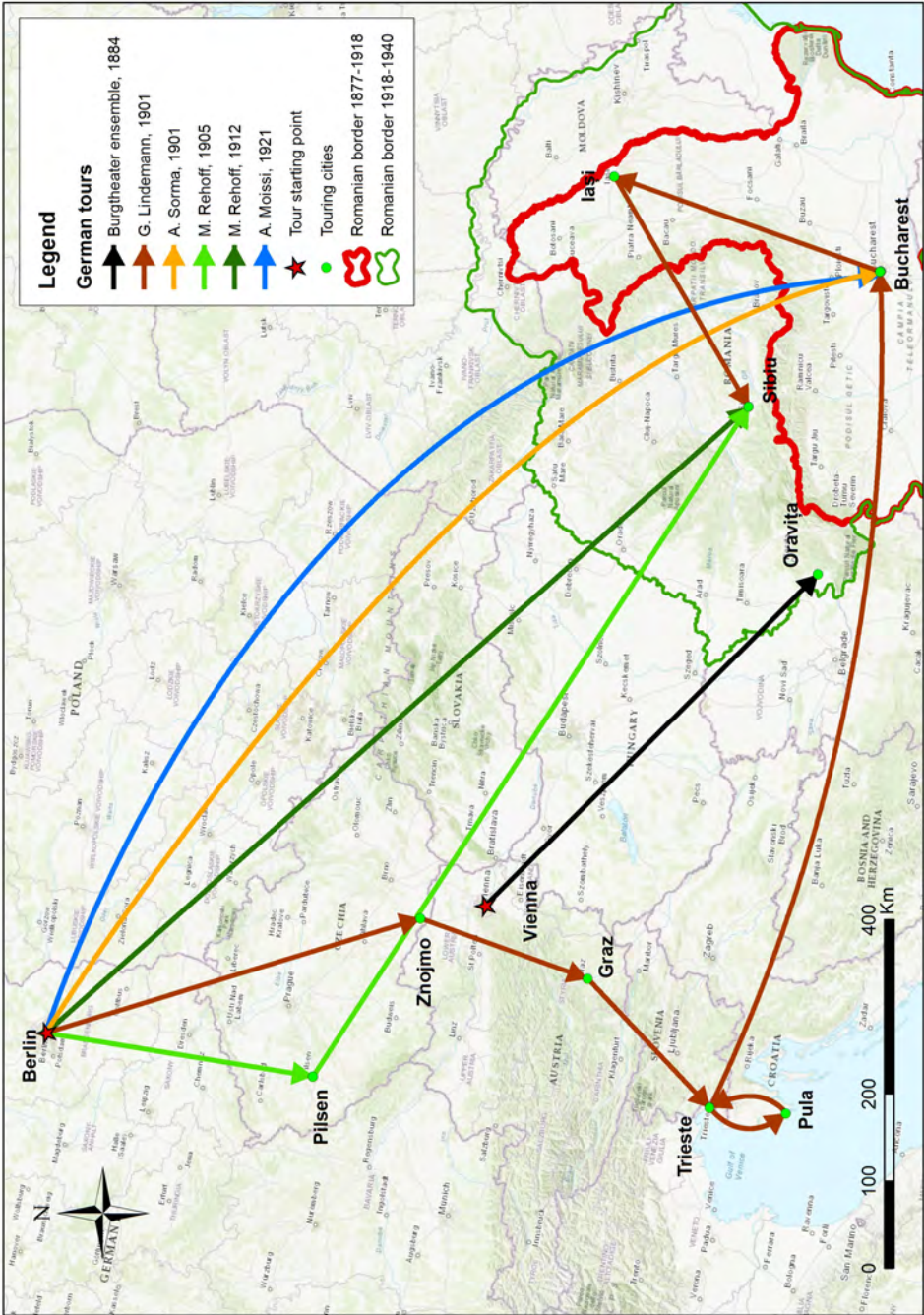


Figure 12: Ibsen events in Hungarian in Transylvania (1879–1945)

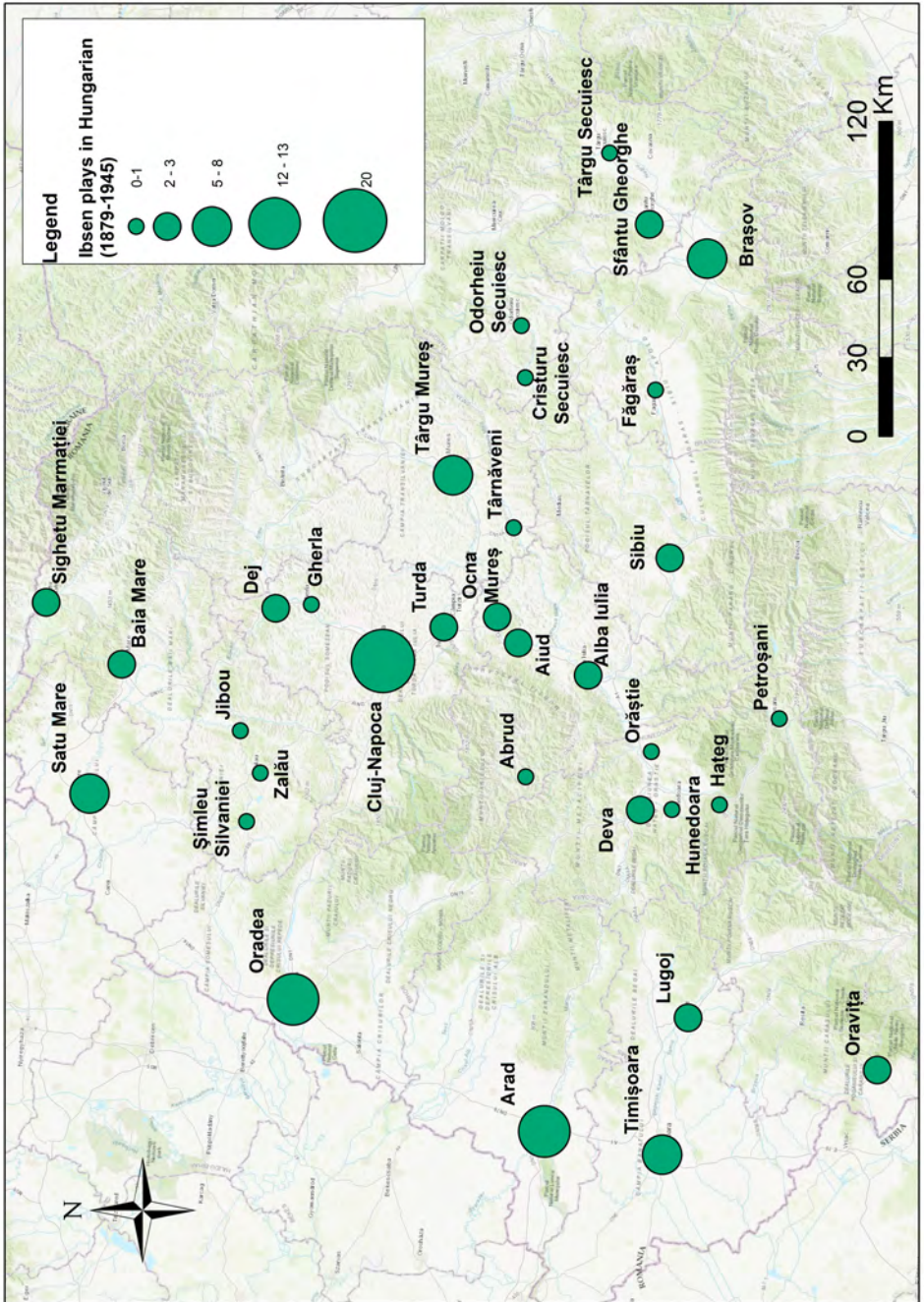


Figure 13: Number of events in Hungarian in Transylvania/Venue (1879–1945)

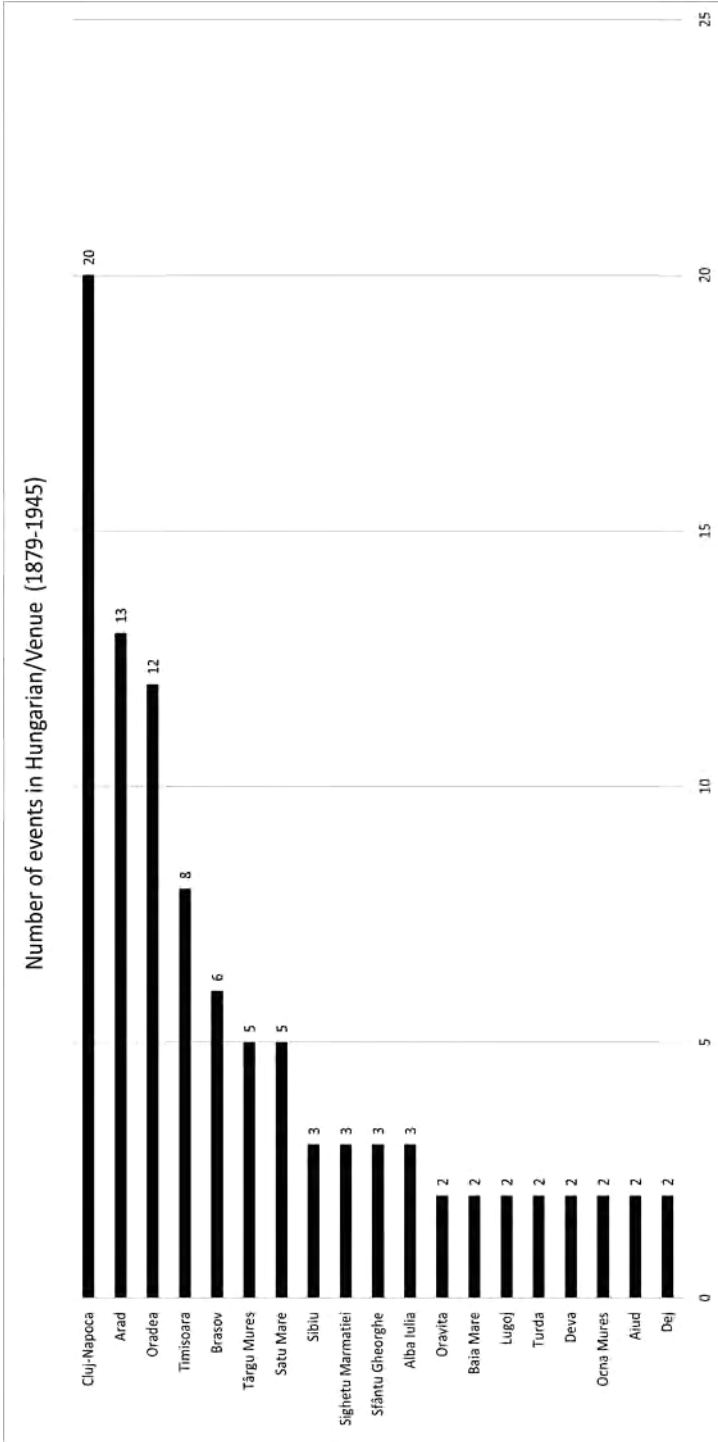


Figure 14: Hungarian organisations staging Ibsen in Transylvania (1879–1945)

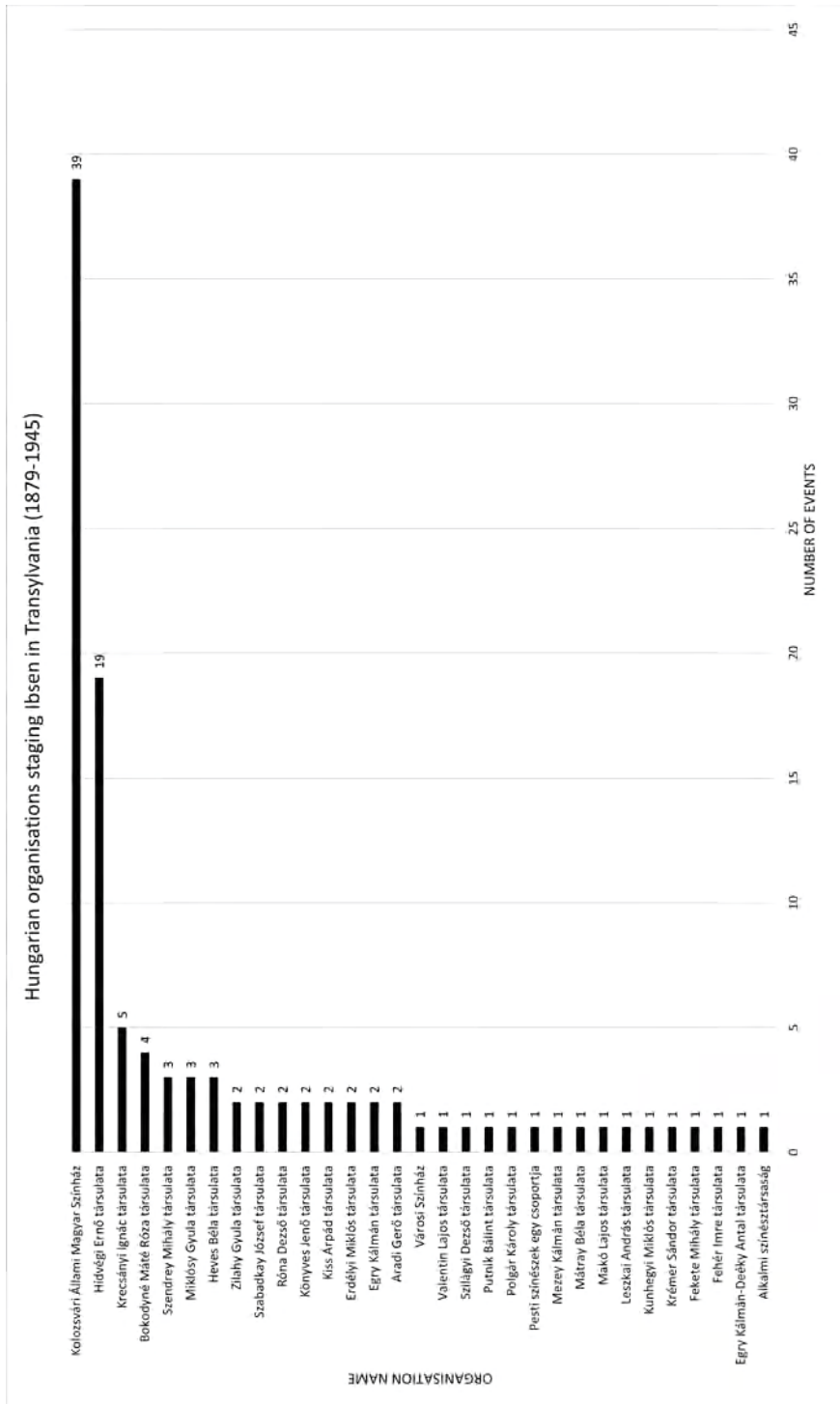


Figure 15: Ibsen plays performed in Hungarian in Transylvania (1879–1945)

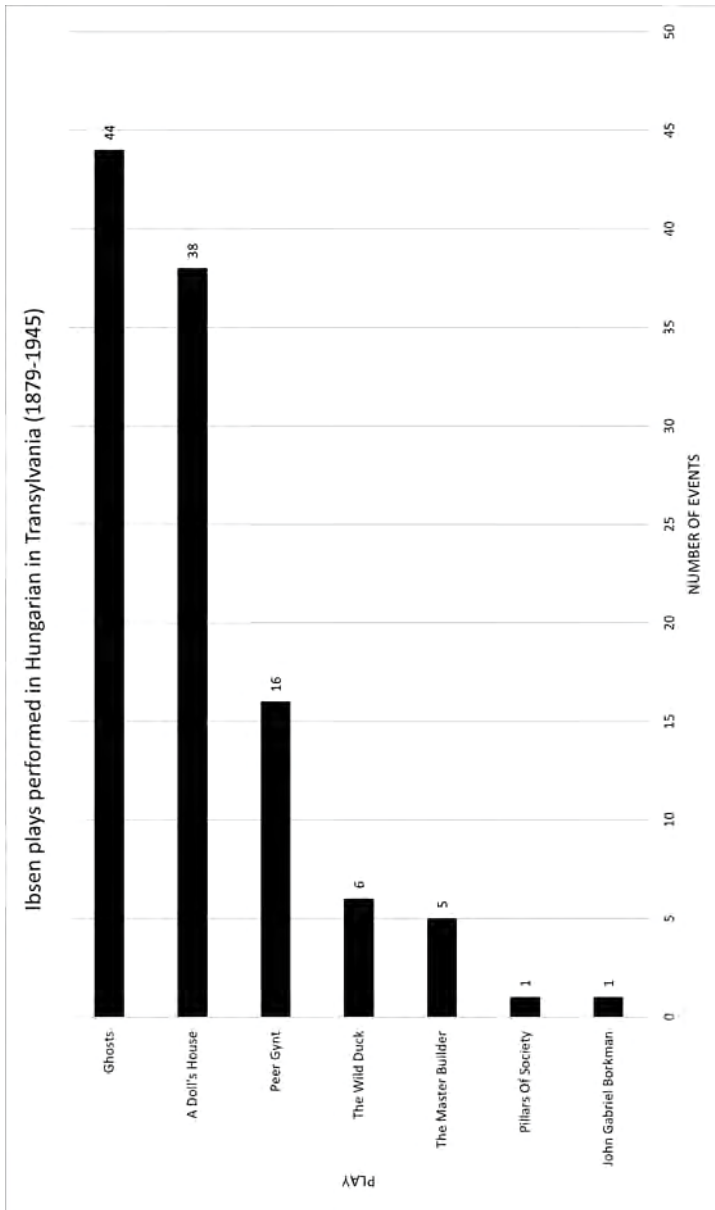


Figure 16: Ibsen plays staged by The Hungarian theatre of Cluj (1879–1945)

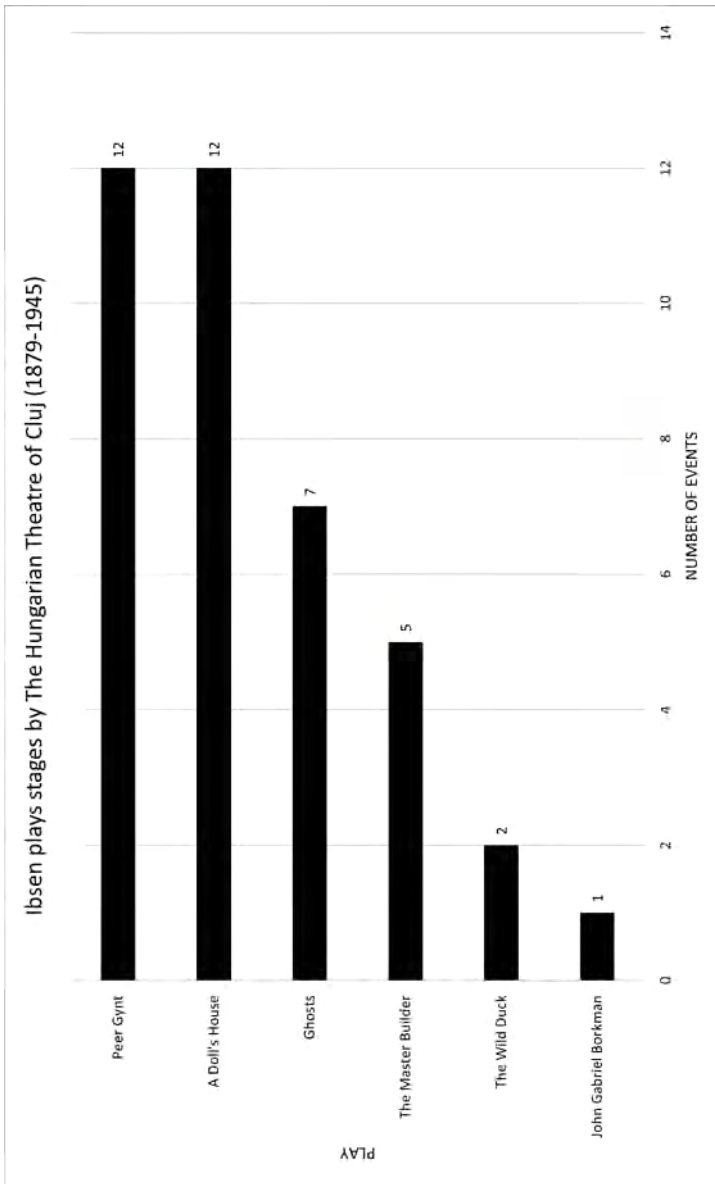


Figure 17: Hungarian actors/actresses performing Ibsen in Hungarian-speaking events in Transylvania (1879–1945)

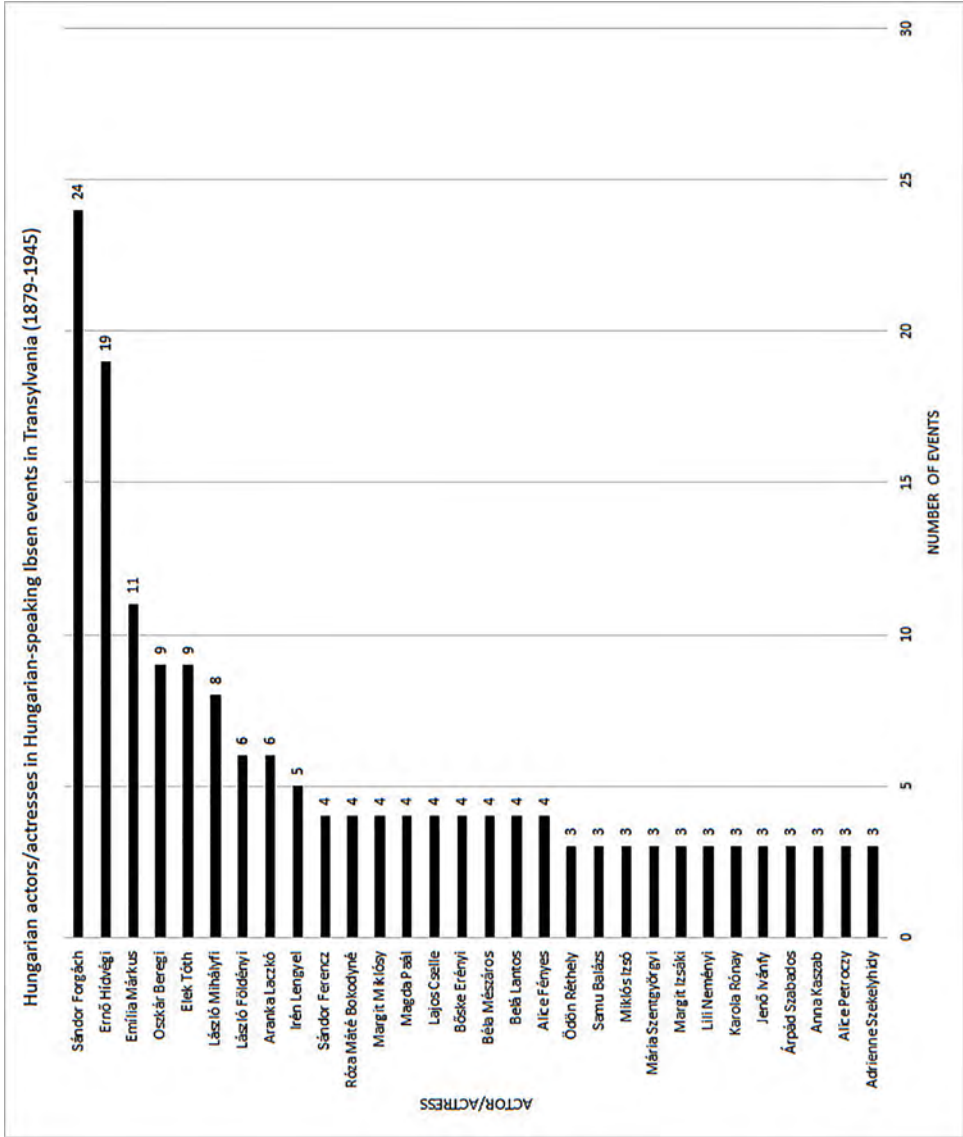


Figure 18: Máté Róza Bokodyné touring performances

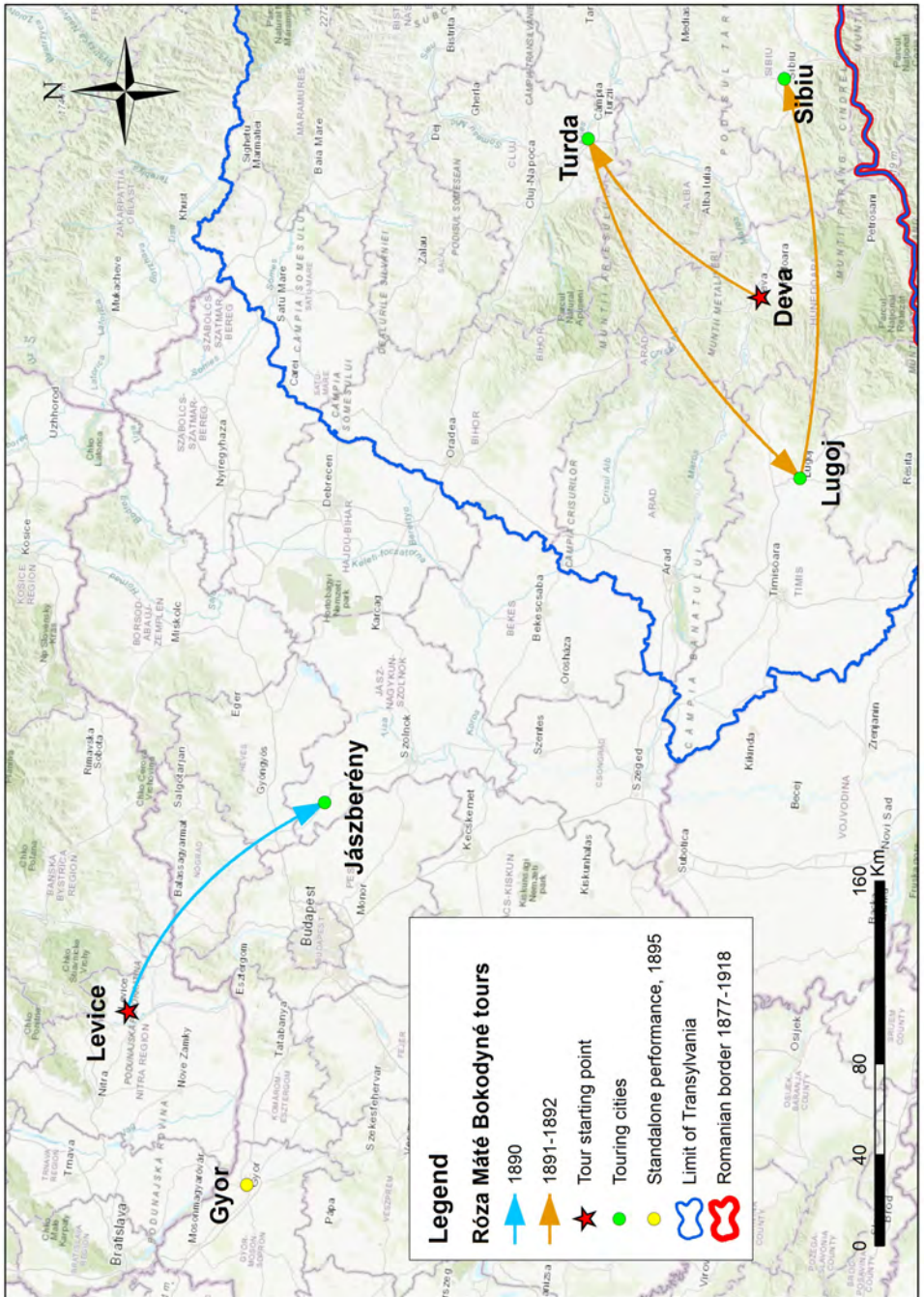


Figure 19: Krecsányi Ignác company touring performances

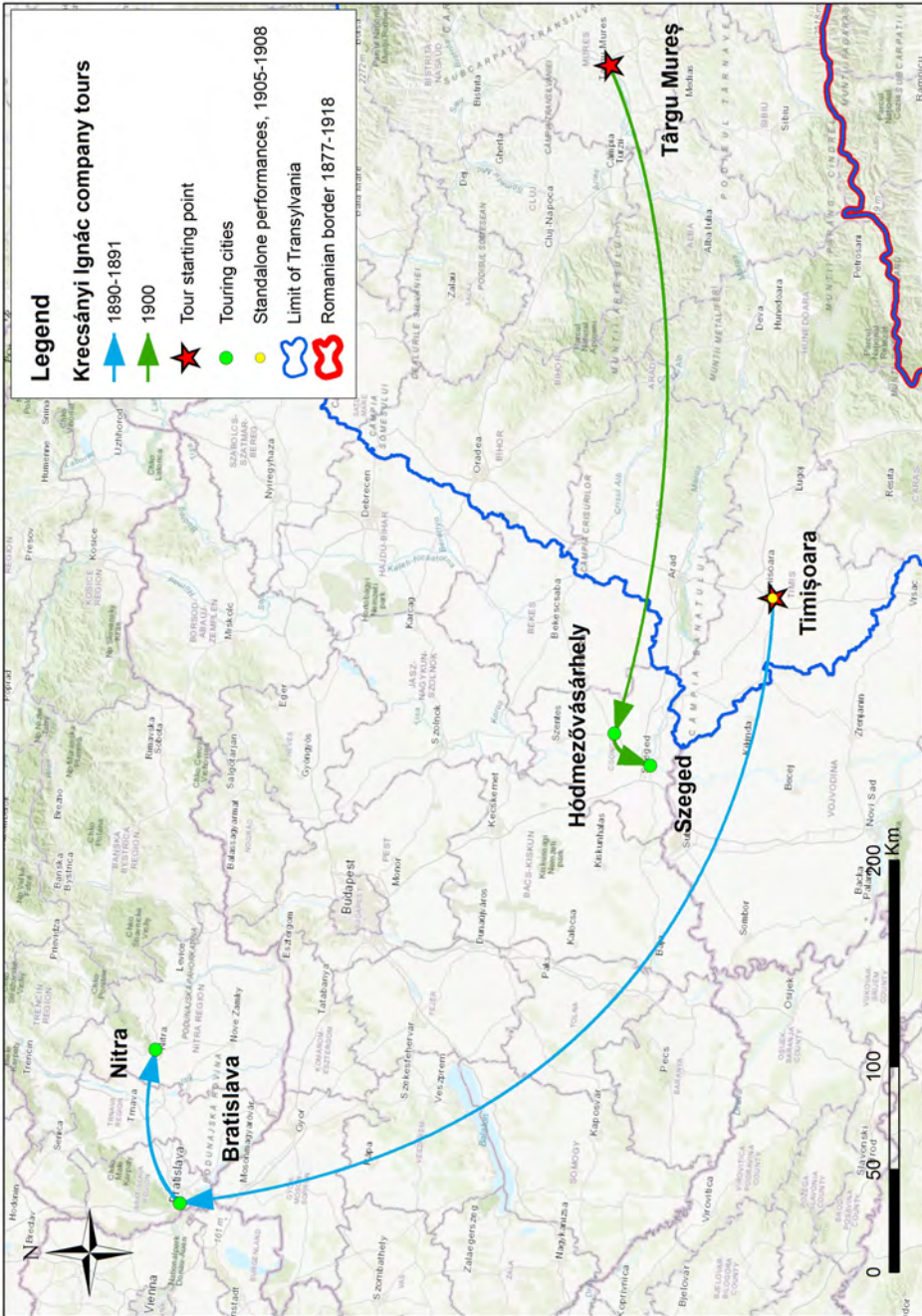


Figure 20: Ernő Hídvégi company touring performances

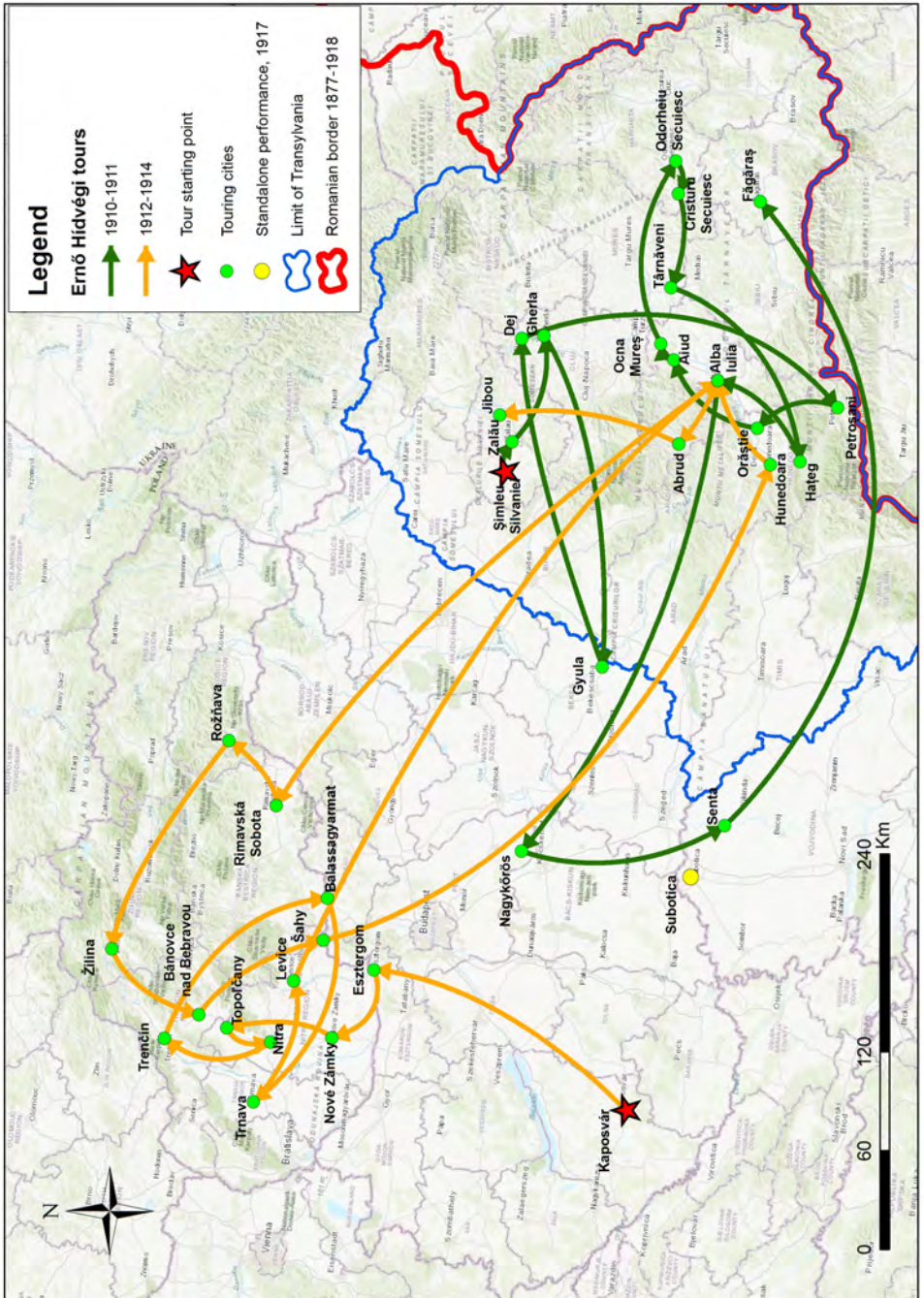


Figure 21: Emilia P. Márkus Ibsen performances

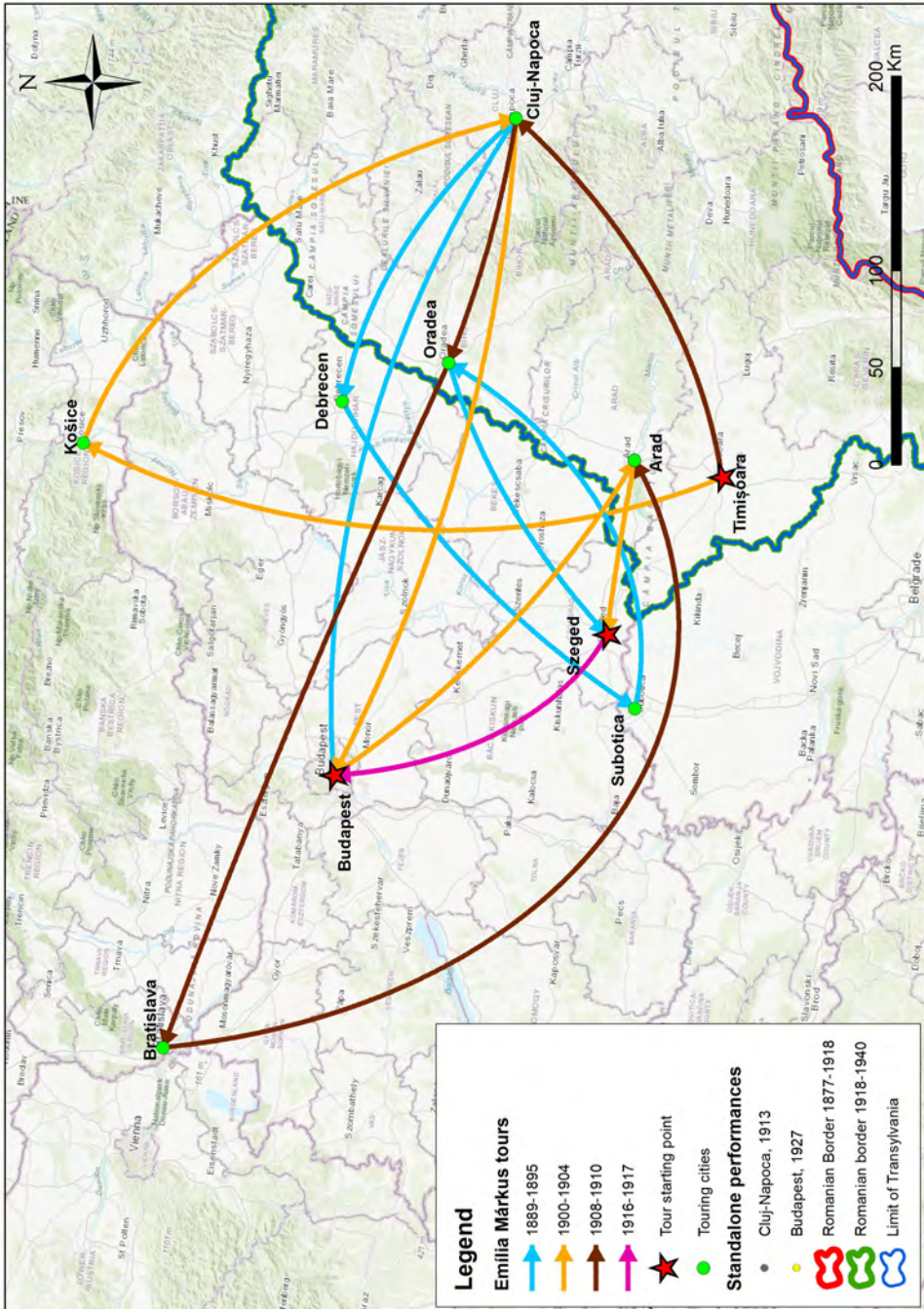


Figure 22: Oszkár Beregi Ibsen performances

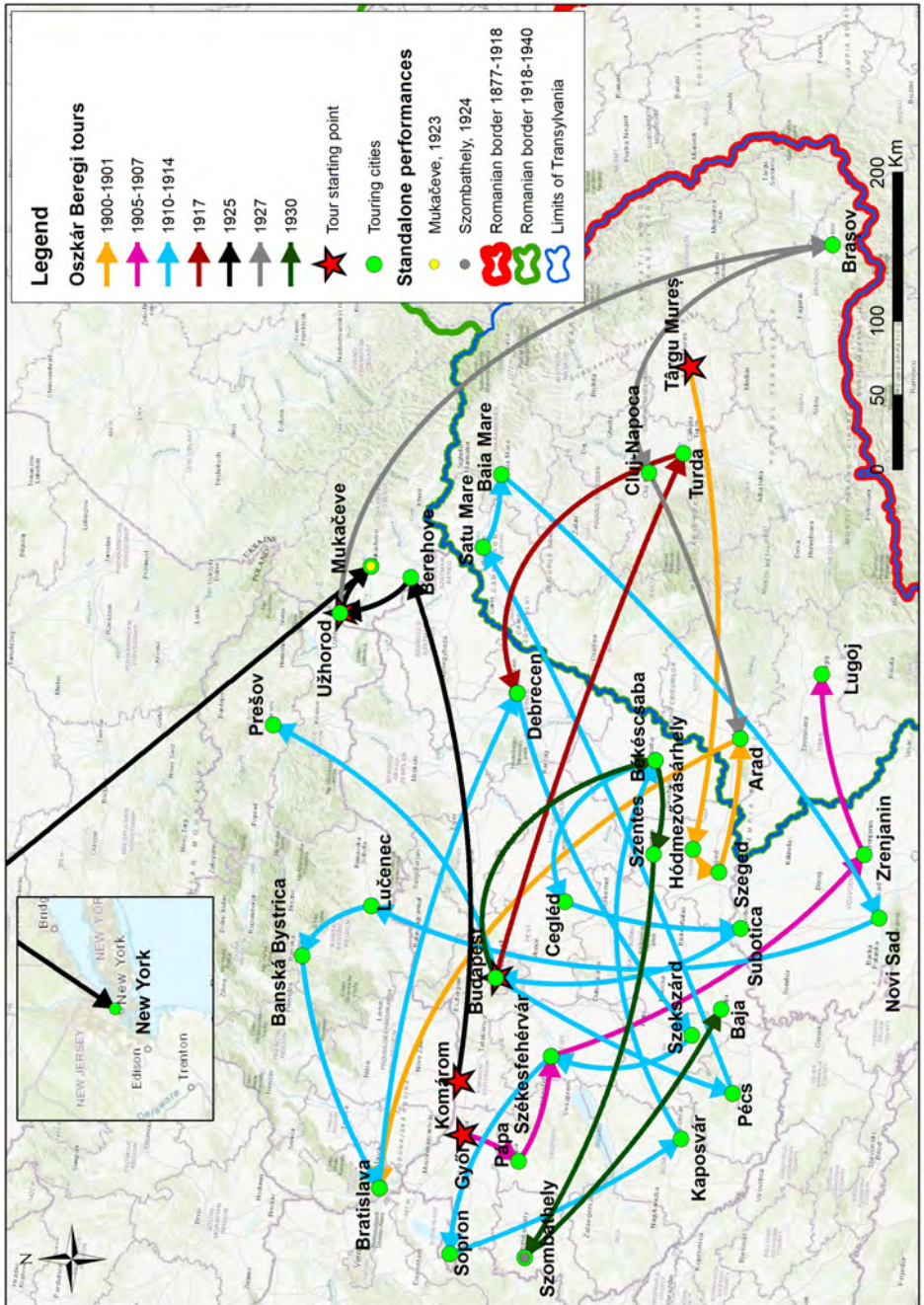


Figure 23: Sándor Forgách Ibsen performances

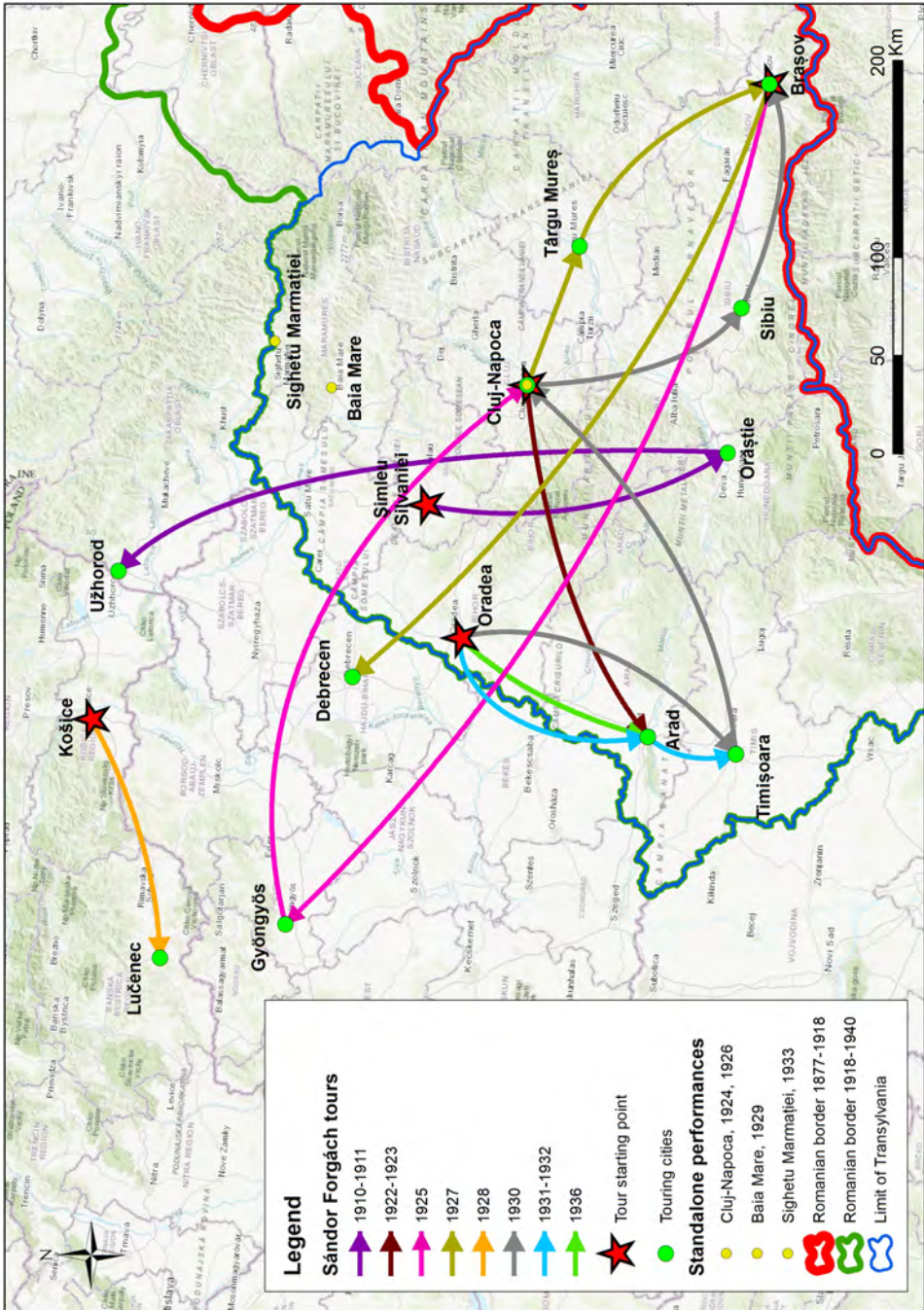


Figure 24: The Yiddish Ibsen tours visiting Romania

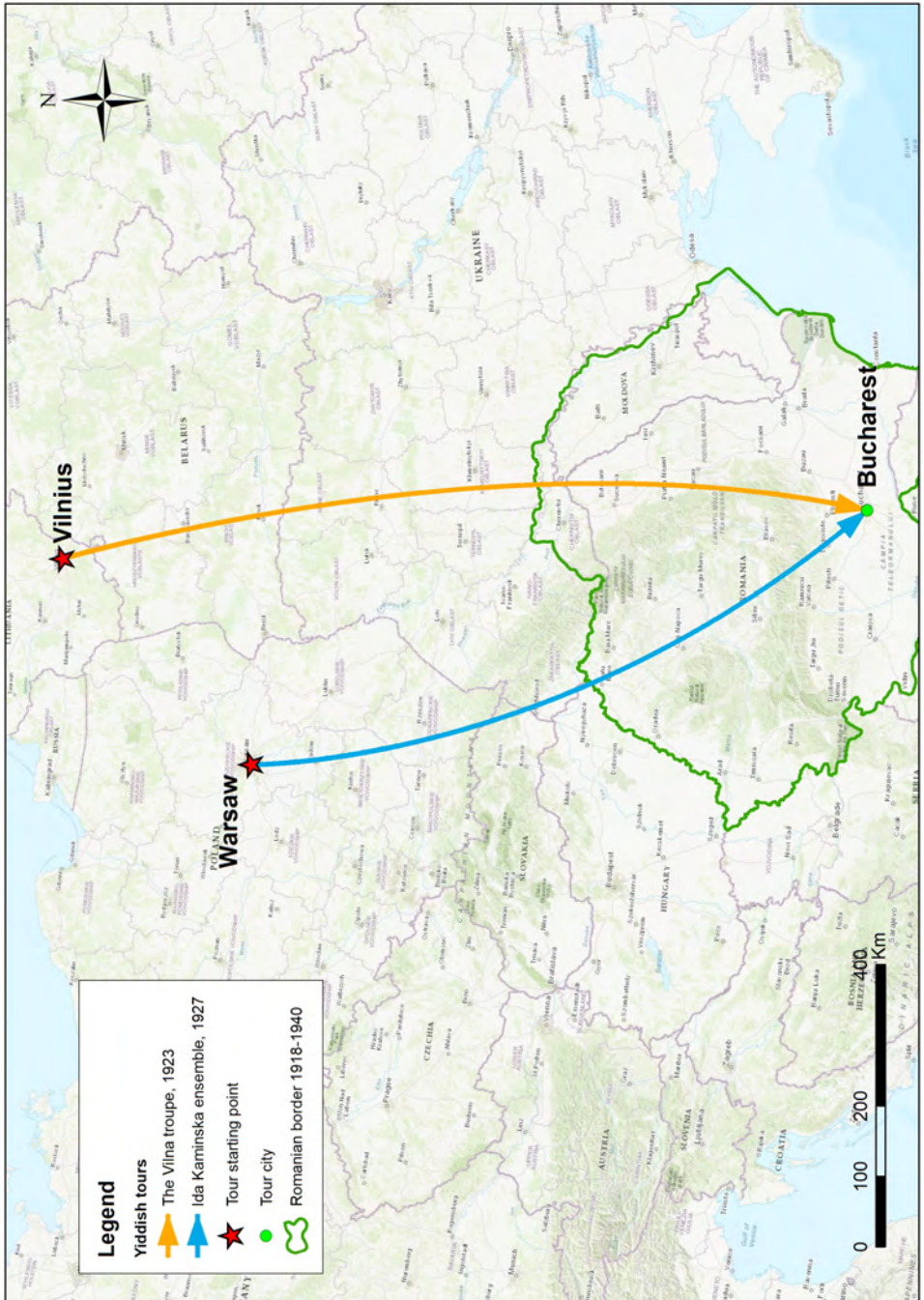


Figure 25: Ibsen events in Romanian 1894–1947

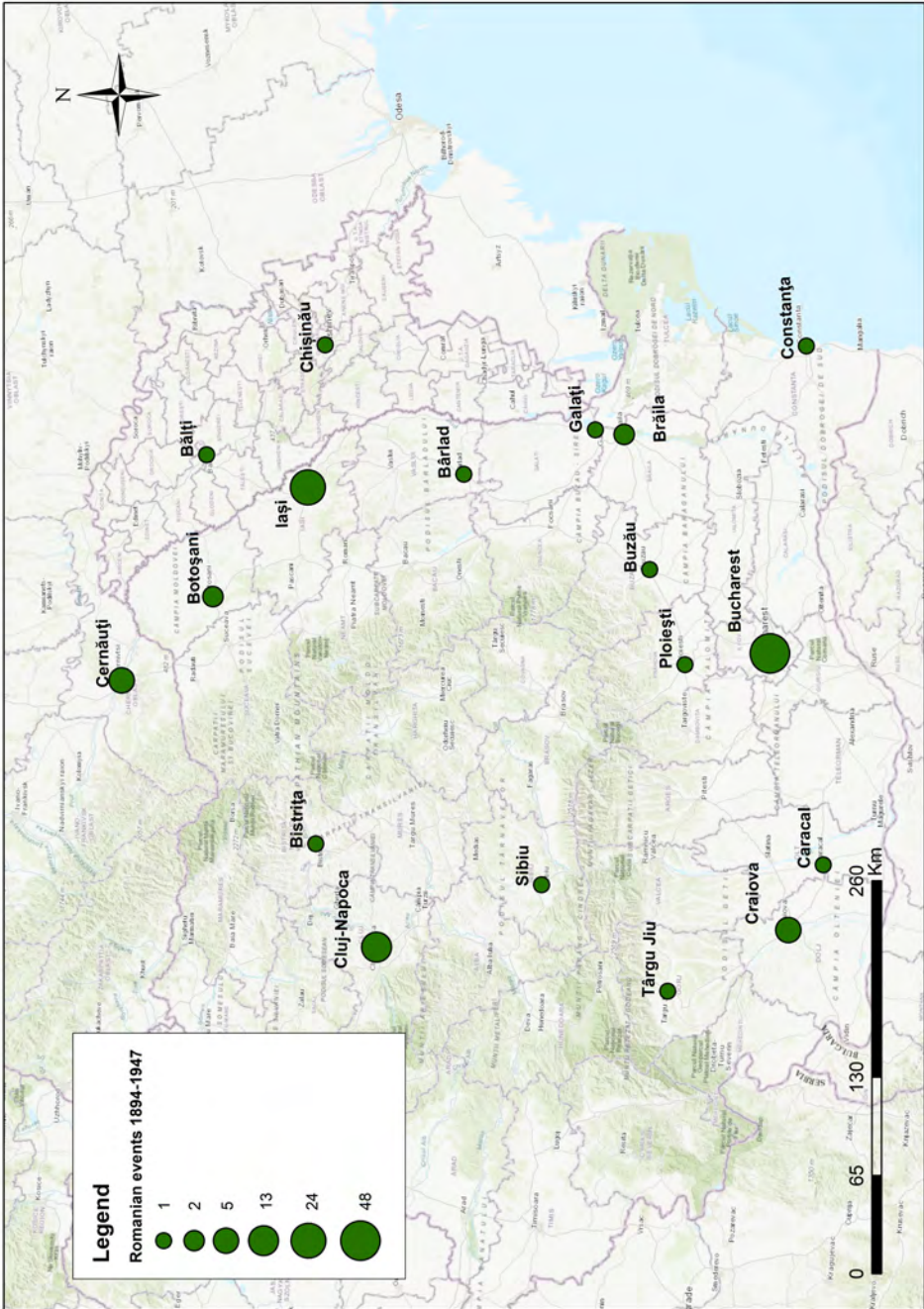


Figure 26: Ibsen plays performed in Romanian 1894–1947

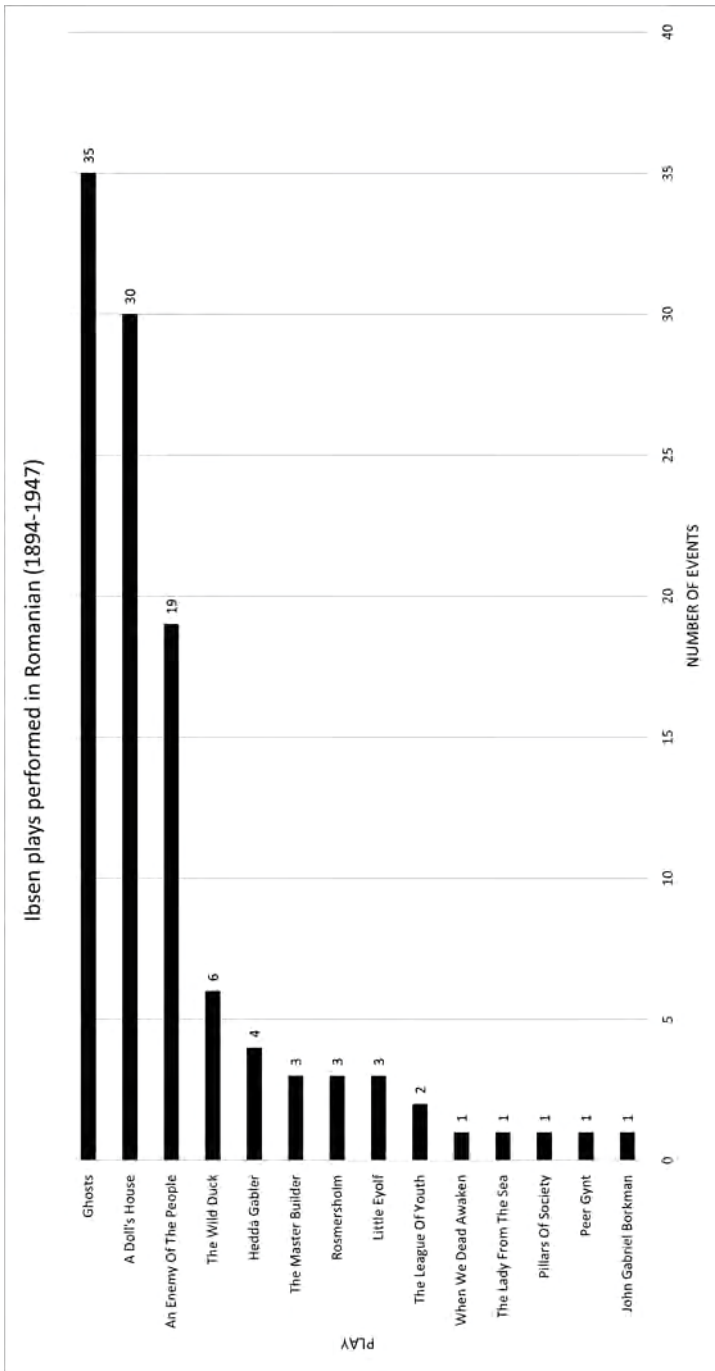


Figure 27: Repertory statistics National Theatre of Bucharest, 18 out of 54 theatre seasons

Origin of the play/Theatre season	1895-1896	1896-1897	1911-1912	1917-1918	1918-1919	1919-1920	1921-1922	1922-1923	1923-1924	1927-1928	1928-1929	1930-1931	1931-1932	1932-1933	1936-1937	1943-1944	1944-1945	1945-1946
Czech	-	-	-	-	-	-	-	-	-	-	-	1	-	-	-	-	1	-
English	3	5	2	-	-	1	2	1	4	1	8	9	7	3	3	2	5	4
French	13	21	7	6	8	3	5	1	7	5	3	13	6	3	3	2	3	6
German	3	3	3	6	3	1	1	-	1	1	-	4	6	1	2	2	-	1
Greek	-	1	-	-	-	2	1	-	1	-	-	-	-	-	-	-	1	-
Hungarian	-	-	1	1	-	-	-	-	-	-	-	2	-	-	-	-	-	-
Italian	-	1	-	2	1	-	2	-	-	1	1	-	-	-	-	2	2	4
<b>Norwegian Ibsen</b>	<b>1</b>	<b>1</b>	<b>1</b>	<b>1</b>	<b>1</b>	<b>1</b>	<b>2</b>	<b>1</b>	<b>1</b>	<b>1</b>	<b>2</b>	<b>1</b>	<b>1</b>	<b>2</b>	<b>1</b>	<b>1</b>	<b>1</b>	<b>1</b>
Norwegian Other	-	-	-	-	-	-	-	-	1	-	-	-	-	-	-	-	-	-
Romanian	9	10	23	16	18	20	13	10	21	12	16	15	16	23	9	16	14	9
Russian	-	-	1	-	1	-	1	-	-	1	-	1	3	2	-	1	2	5
Spanish	-	-	-	-	-	-	-	-	1	-	-	-	1	1	-	1	-	-
Swedish	-	-	-	-	-	-	-	-	1	-	-	-	-	-	-	-	-	-

Figure 28: Repertory statistics National Theatre of Iași, 11 out of 54 theatre seasons

Origin of the play/Theatre season	1894-1895	1900-1901	1903-1904	1909-1910	1919-1920	1925-1926	1927-1928	1928-1929	1944-1945	1945-1946	1946-1947
Czech	-	-	-	-	-	-	-	1	-	2	1
English	-	3	7	-	2	-	3	3	-	1	2
French	-	17	15	19	15	13	15	4	11	-	6
German	-	9	3	3	5	1	-	7	1	3	-
Hungarian	-	-	-	-	-	-	1	1	1	-	-
Italian	-	-	2	2	1	-	1	1	-	-	1
<b>Norwegian Ibsen</b>	-	<b>2</b>	<b>1</b>	<b>1</b>	<b>2</b>	<b>1</b>	<b>1</b>	<b>1</b>	<b>1</b>	<b>1</b>	<b>1</b>
Norwegian Other	-	-	-	-	1	-	-	-	-	-	-
Romanian	-	10	20	6	5	8	5	5	5	10	6
Russian	-	1	-	1	-	-	2	-	3	2	6
Yiddish	-	-	-	-	-	-	1	-	-	1	-

Figure 29: Actors performing in Romanian Ibsen events (1894–1947)

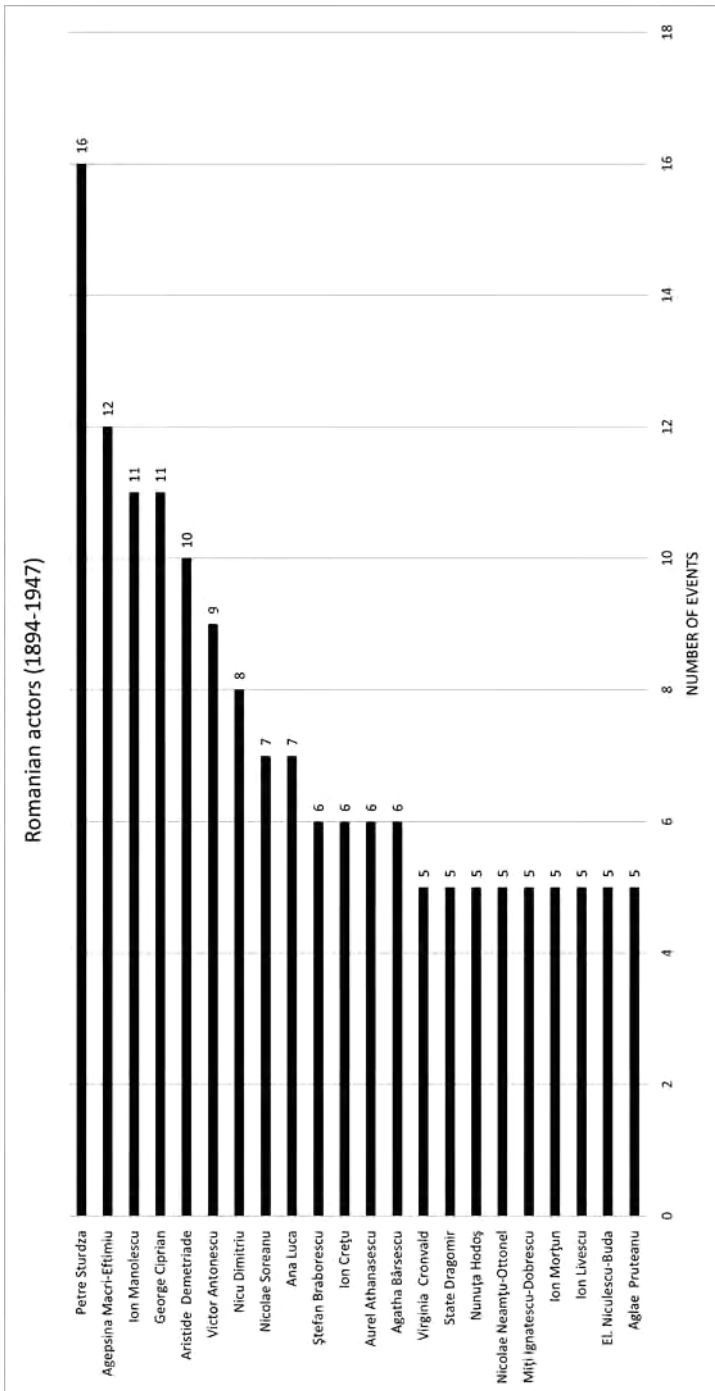


Figure 30: Actors performing in leading roles in Romanian Ibsen events (1894–1947)

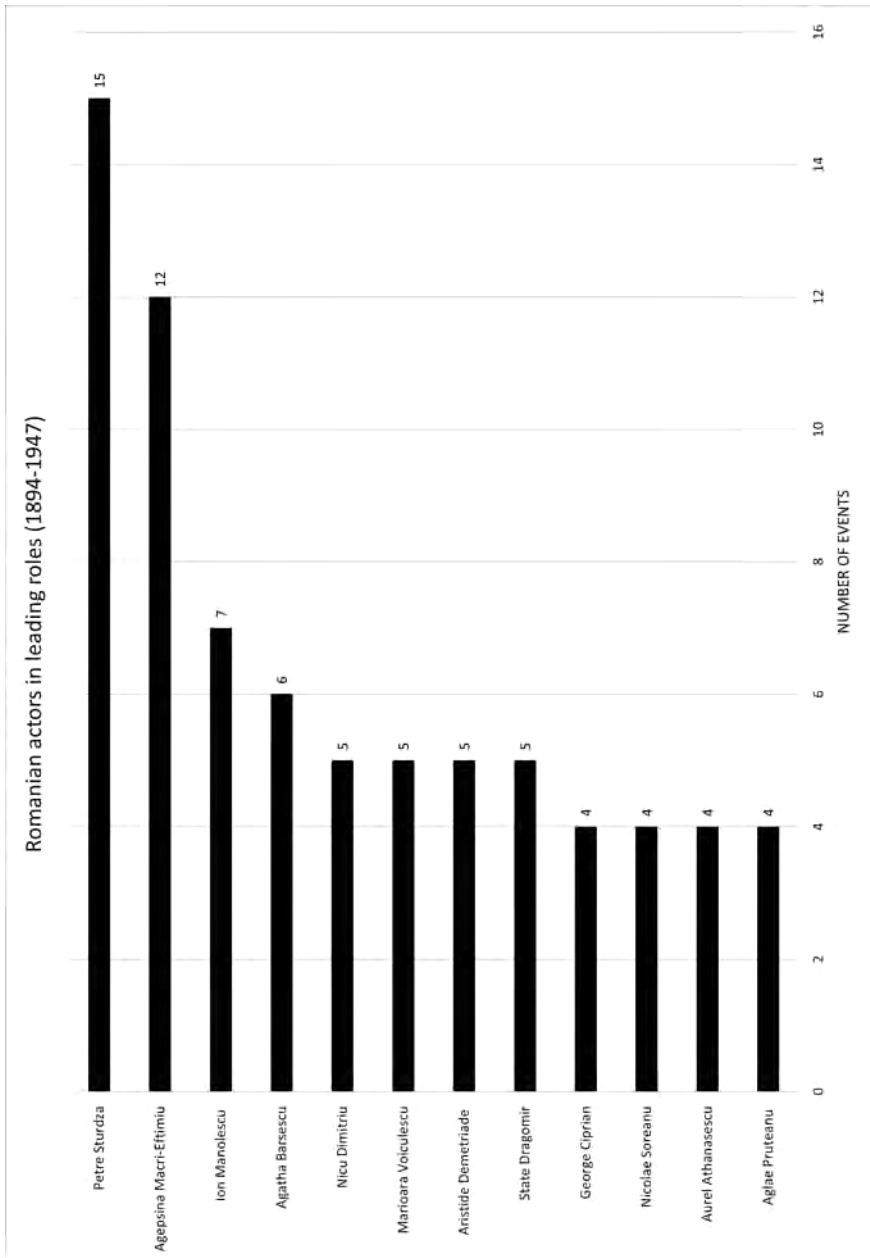


Figure 31: Actors performing in secondary roles in Romanian Ibsen events (1894–1947)

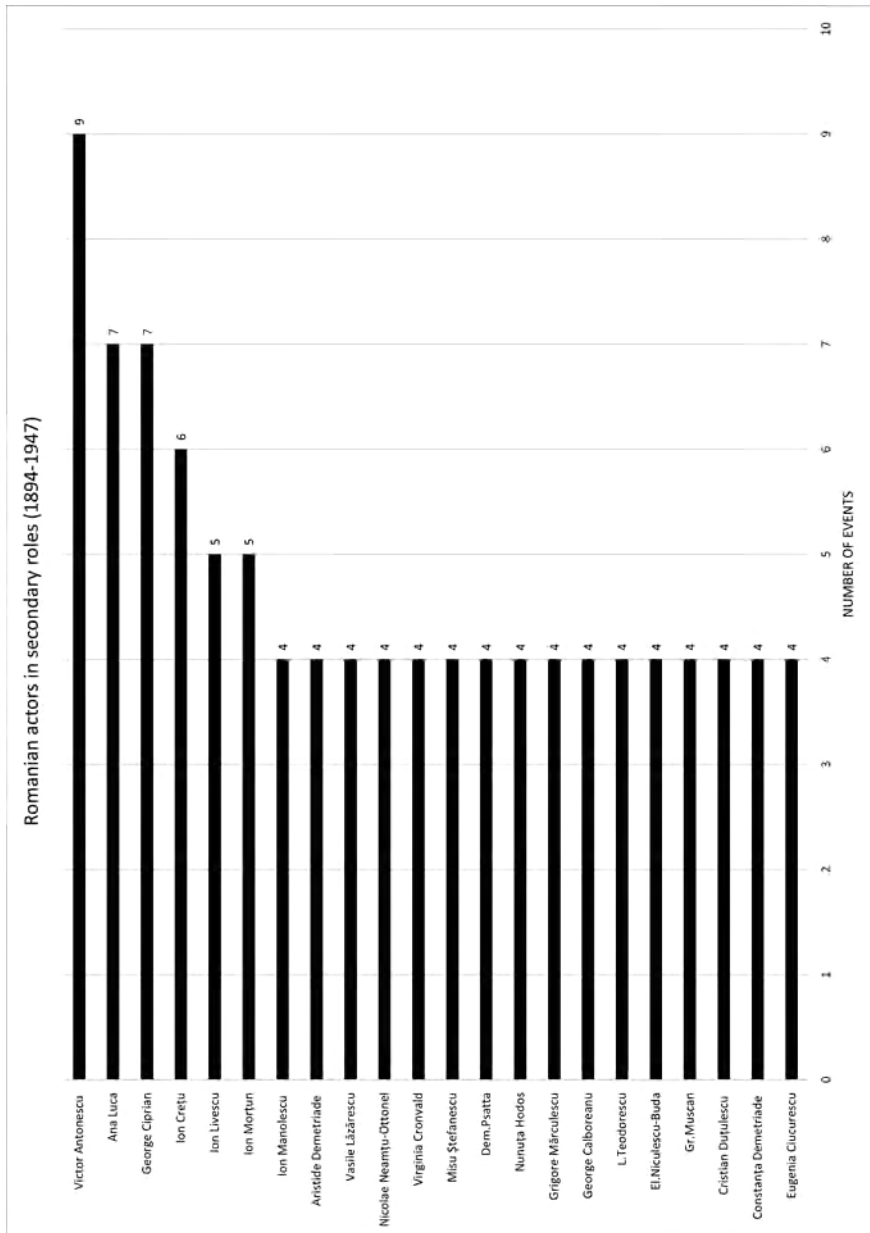


Figure 32: Directors staging Romanian Ibsen events (1894–1947)

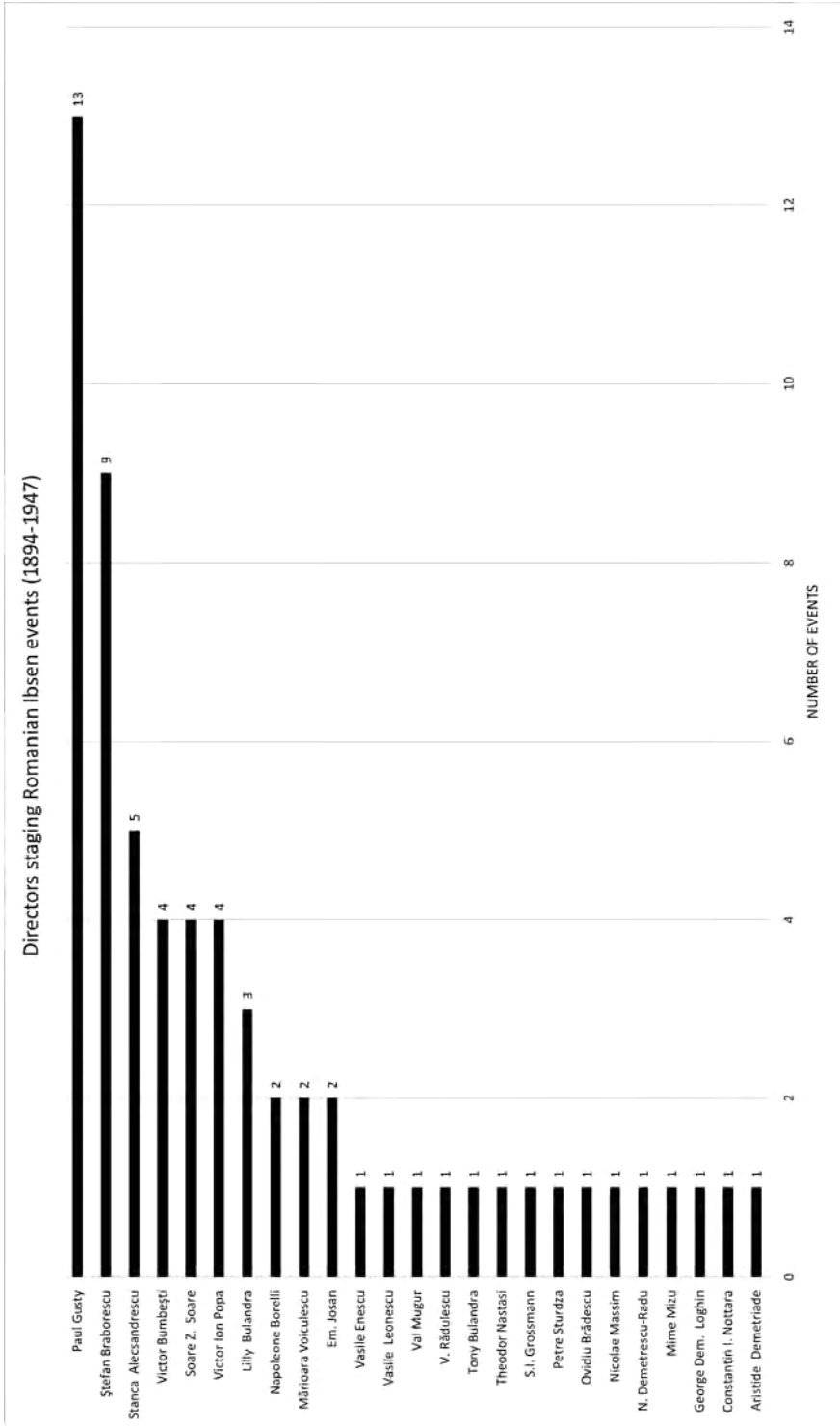


Figure 33: Directors vs. Star-actors (as stage directors)

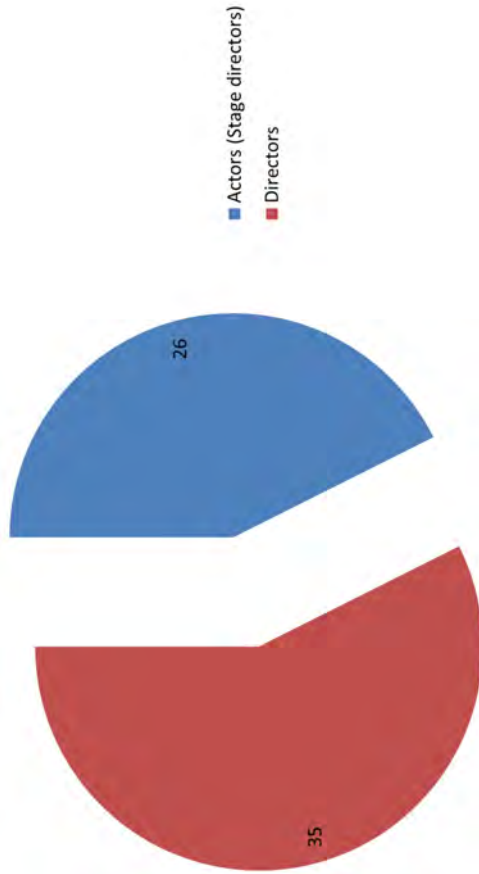


Figure 34: Temporal frame. Romanian Ibsen contributors (1894–1947)



Figure 35: Romanian organisations staging Ibsen (1894–1947)

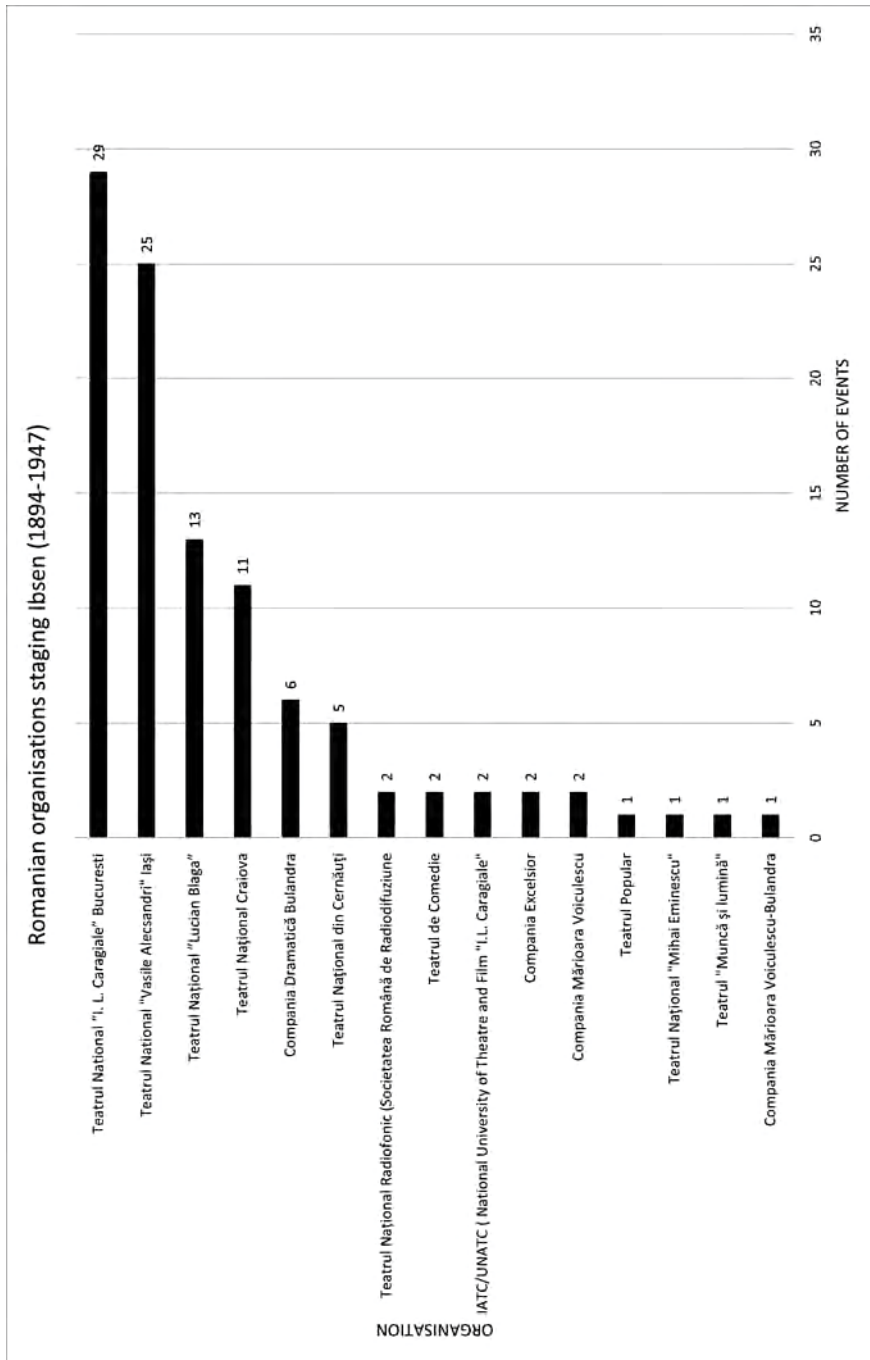


Figure 36: Ibsen plays staged at the National Theatre of Bucharest (1894–1947)

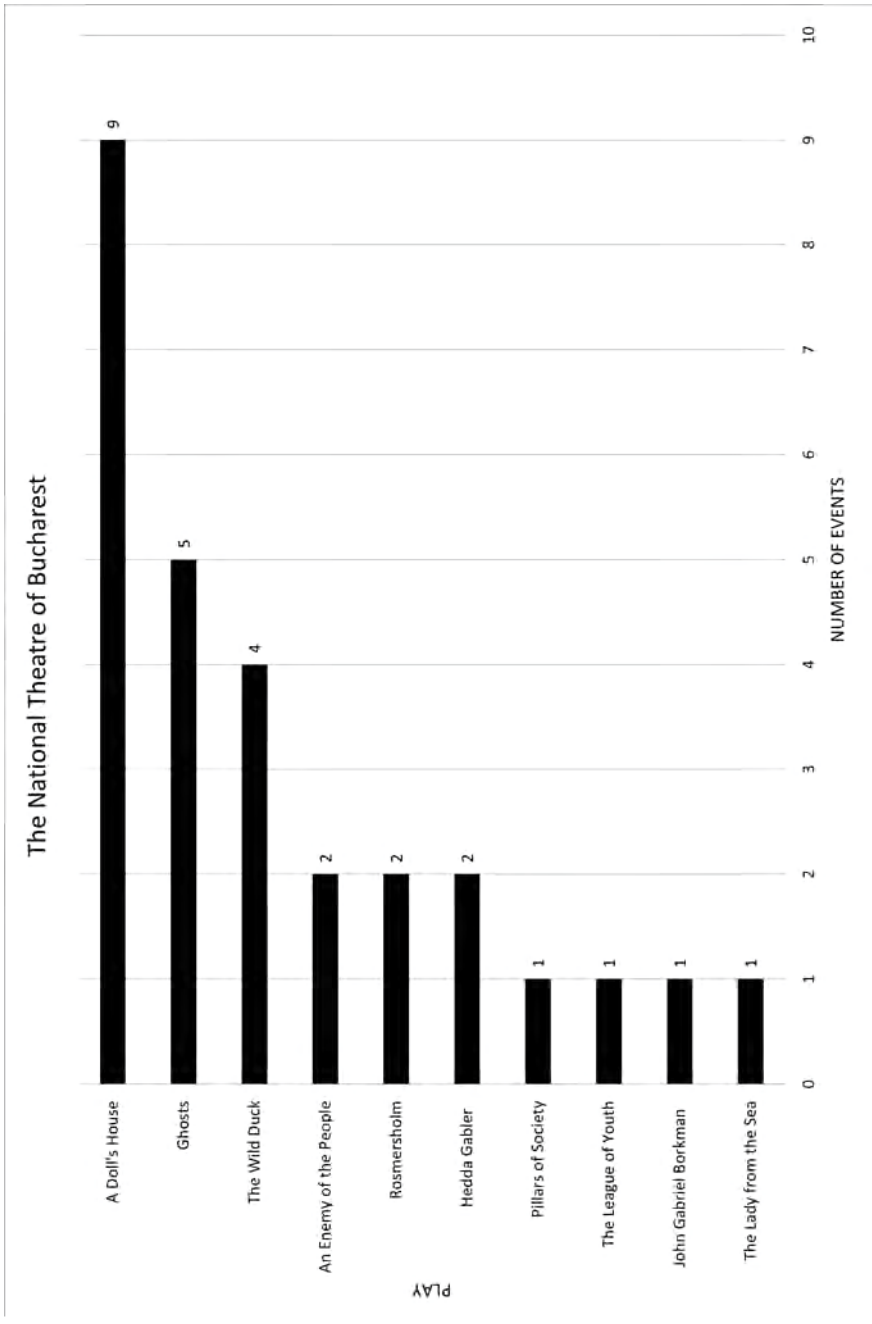


Figure 37: Ibsen plays staged at the National Theatre of Iași (1894–1947)

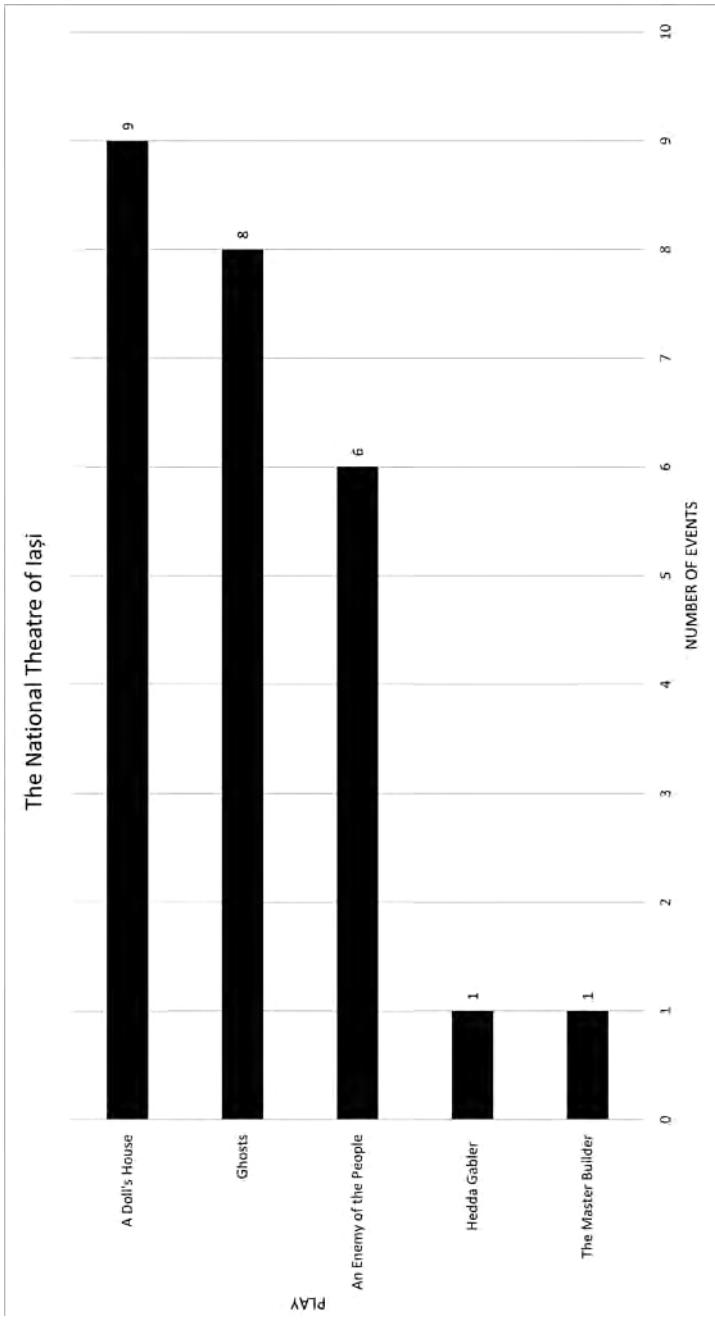


Figure 38: Ibsen plays staged at the National Theatre of Cluj-Napoca (1894–1947)

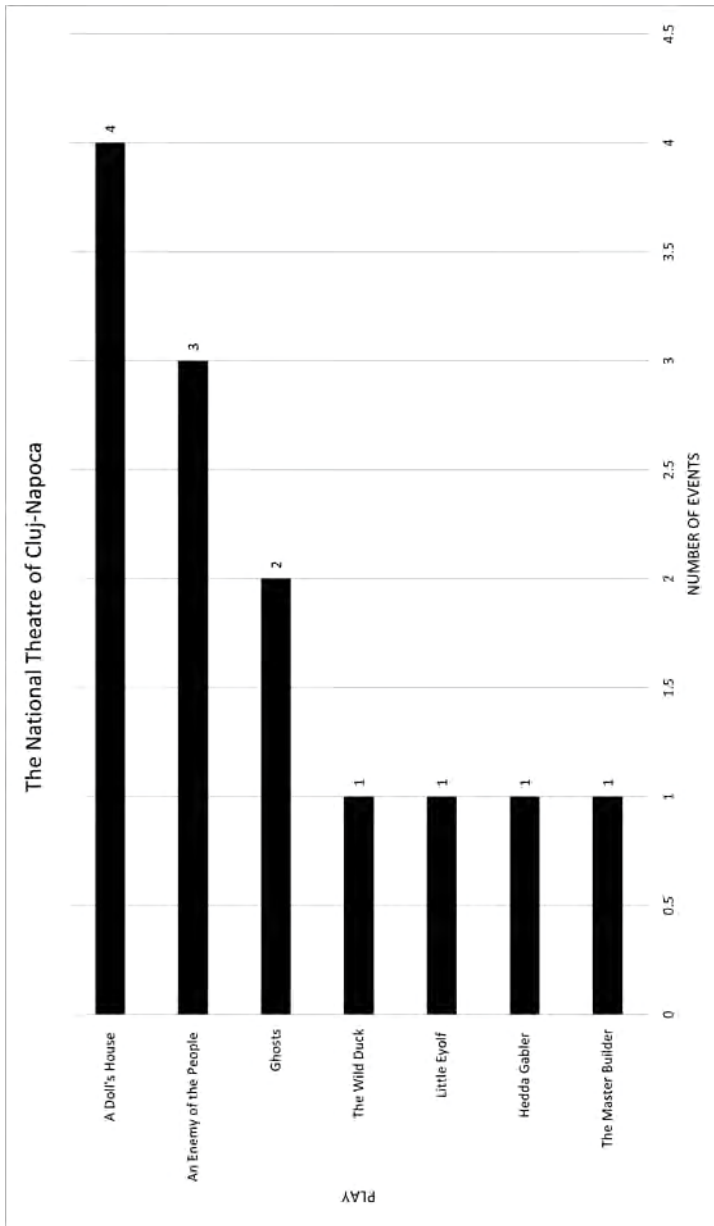


Figure 39: Aglae Pruteanu and State Dragomir Ibsen tour

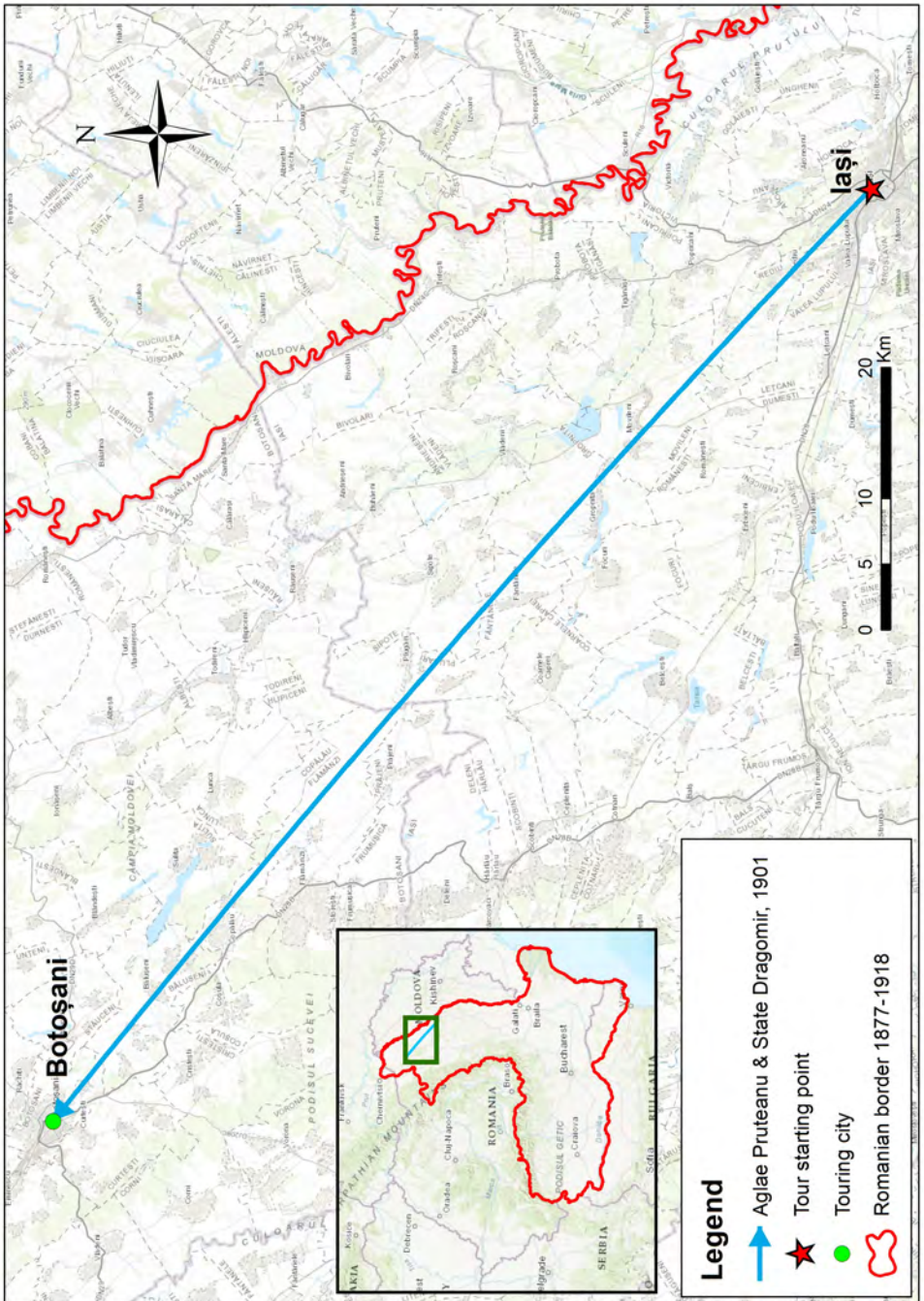


Figure 40: Ion Manolescu Ibsen tours

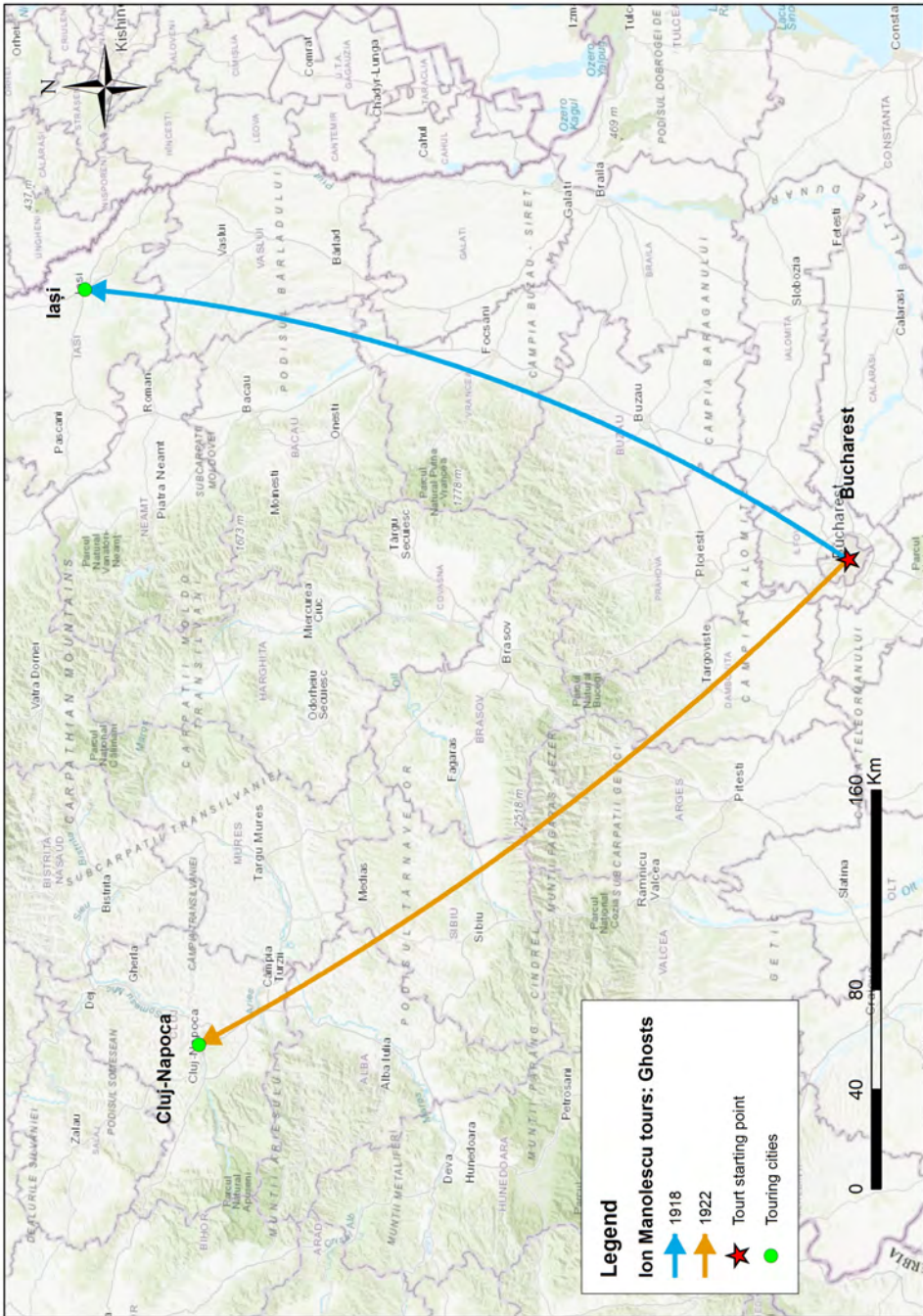


Figure 41: Mărioara Voiculescu Ibsen tour

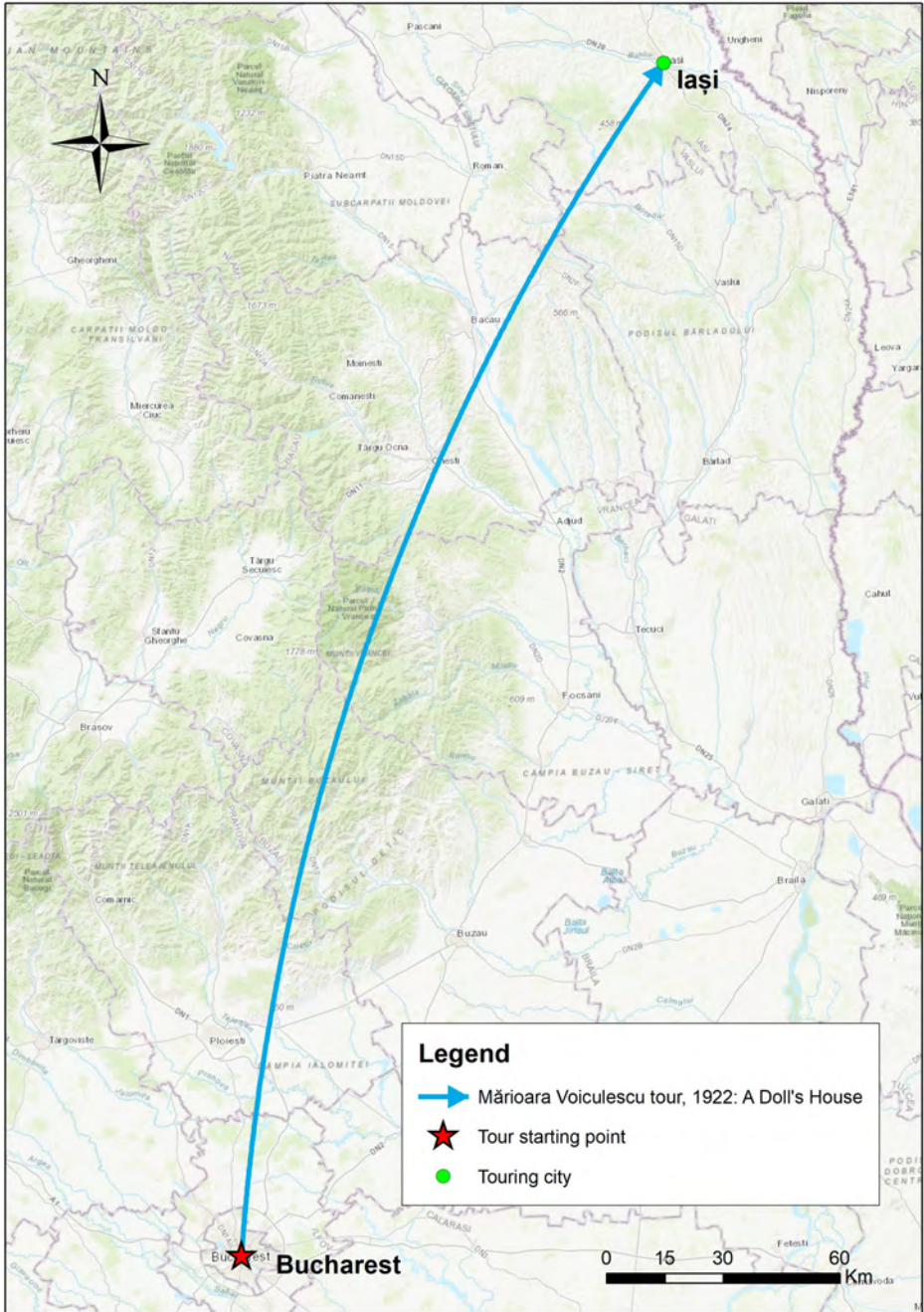


Figure 42: Aristide Demetriade Ibsen tours

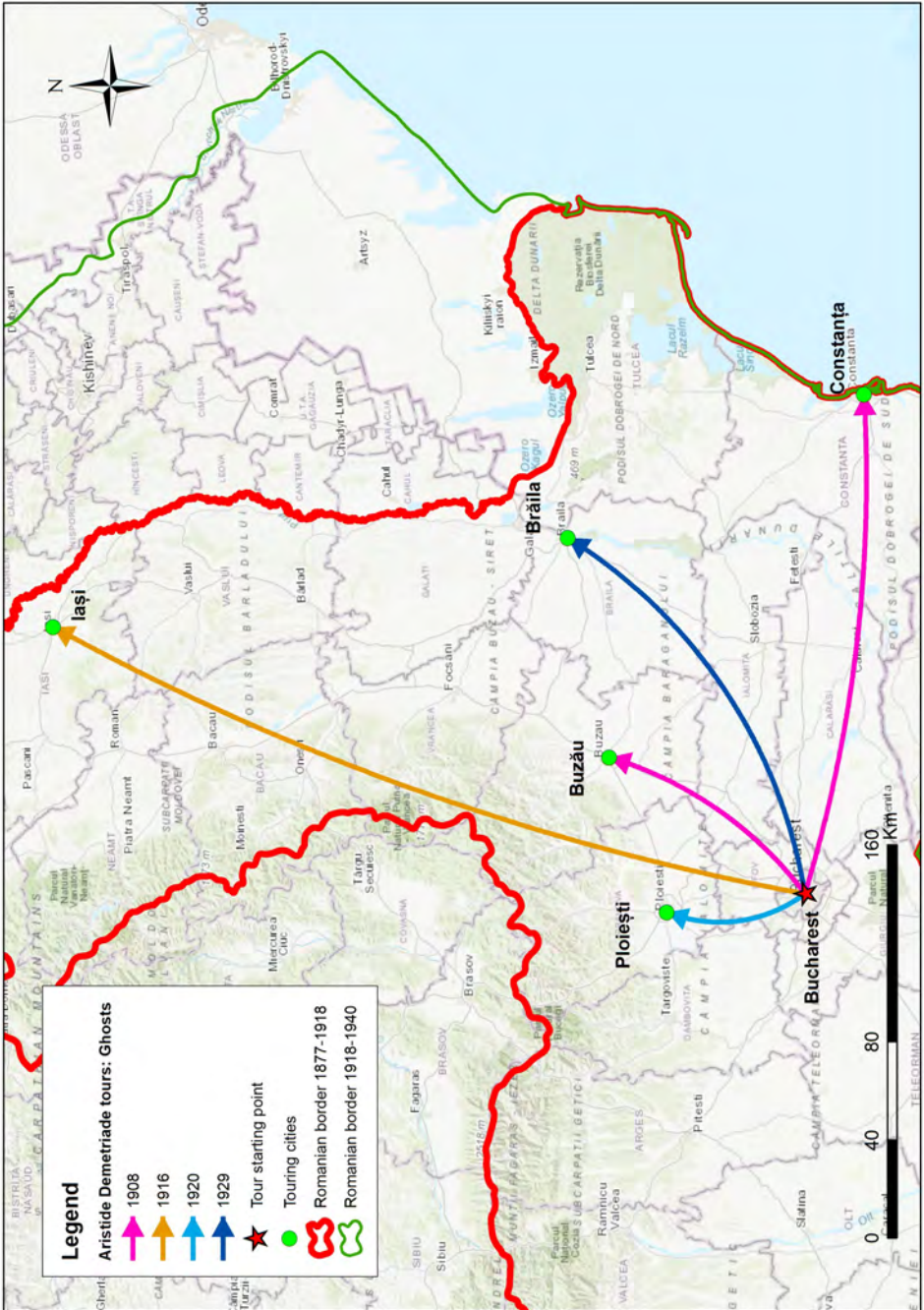




Figure 44: Petre Sturdza Ibsen tours

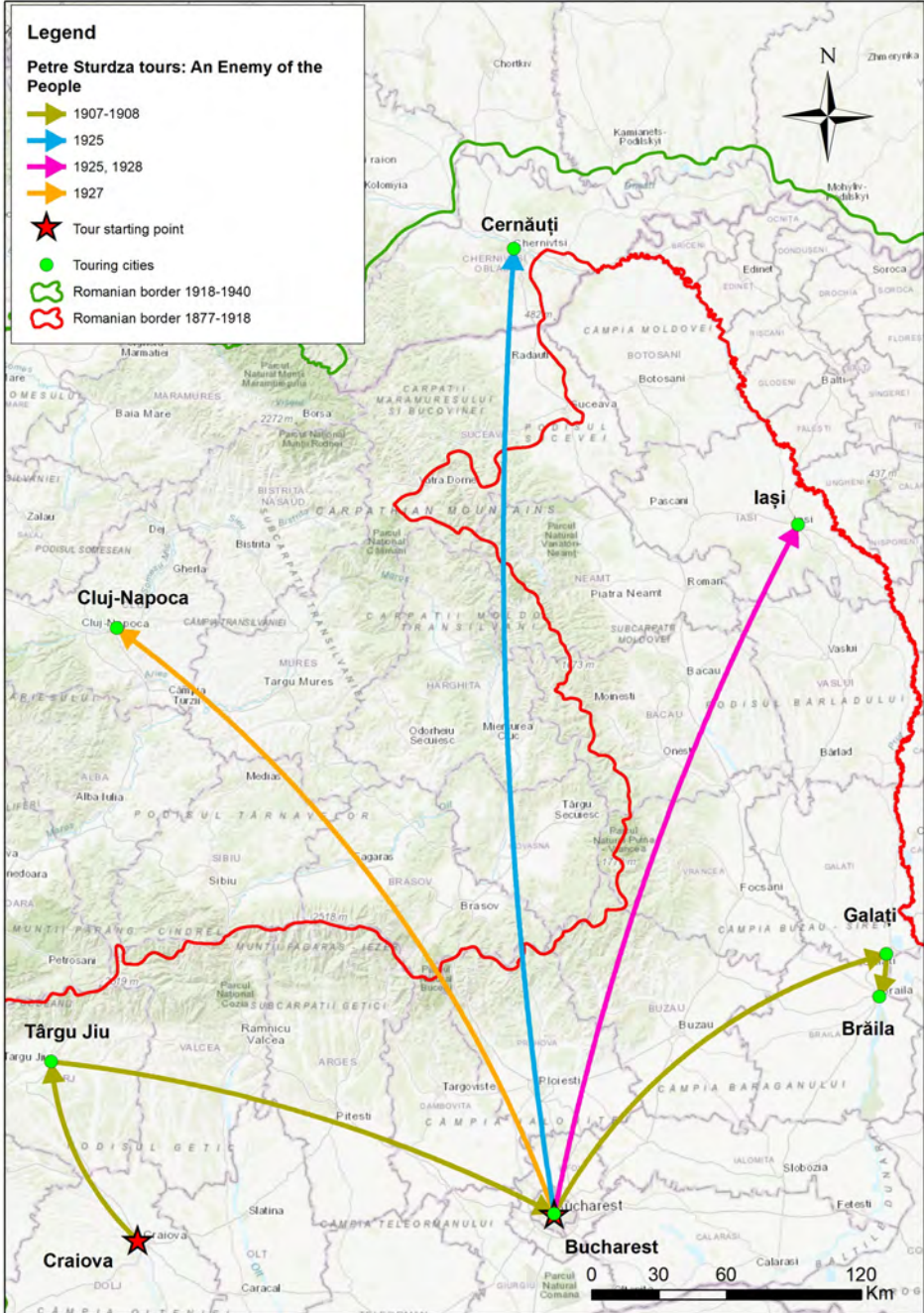


Figure 45: Institutional transmission

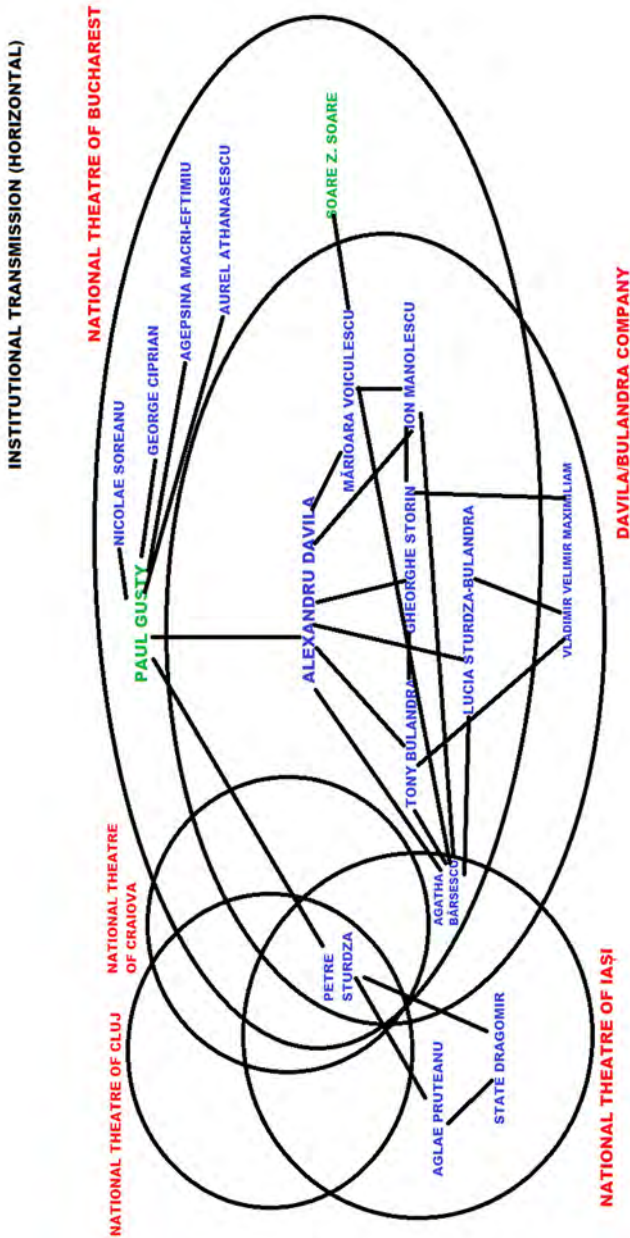


Figure 46: Production hubs

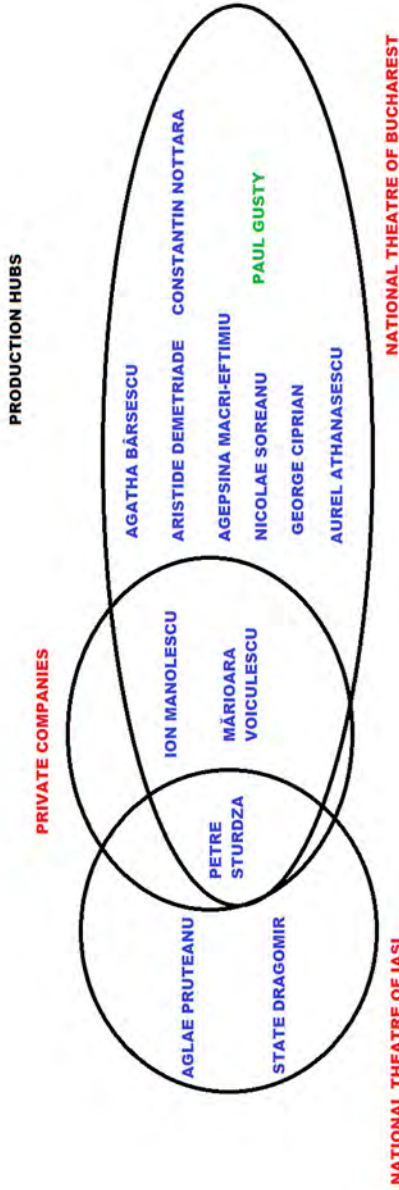


Figure 47: Generational transmission



Figure 48: Prestige transmission



